

OSIS



OSIS TECHNIQUE

We transferred the effects of osmosis caused by salt onto the wood. The surface is glazed monochrome or multi-colour. Salt is spread on the wet surface in different techniques. Soon the natural process is starting. Salt has the talent to absorb liquids from its surrounding and as well to collect the pigments of the paint.

SALT EFFECT

The results are affected by the kind of salt used, humidity and length of reaction time. A series of experiments shows that big crystals tend to create big rims with strong contrasts, whereas fine crumbs of the salt trigger more differentiated patterns with softer gradients. When combined with wood, the salt draws the pigment into the natural flow of the grain, emphasizing the unique features of the original material.





LIQUID RESISTANT

The surface has resistance to water and oil. It is possible by the strength of the PU lacquer used. The surface can be cleaned easily.

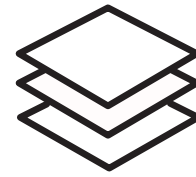
TEMPERATURE RESISTANT

According to the standard EN 13501-1, the surface has a good level of resistance (level B1) in contact with fire and limited combustibility.

HYGIENIC

Does not release harmful substances. The surface is suitable for contact with food.

HARD FACTS
OSIS SURFACE



MATERIAL

MDF - from 6mm - 40mm
MDF standard - 19mm
Slotted MDF - 11mm



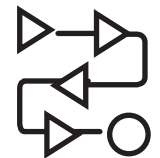
VENEER

Birch or Maple Veneer



SURFACE FINISH

PUR lacquer, resistant, lightfast and
formulated with additional light protection



PRODUCTION

within 5 weeks after payment



PRICE

from 440 Euro per sqm

SALT x PATTERN

01_RANDOM

Random pattern is based on medium and big salt stones. Salt crystals are randomly spread on the surface.

02_STRIPES

Stripe pattern is based on small stone salt. Salt is filled in a funnel and straight lines are drawn by hand.

03_CLUSTER

Cluster pattern is based on medium and big salt crystals. Salt is dyed before pouring in piles onto the glazed surface.

04_SPRINKLE

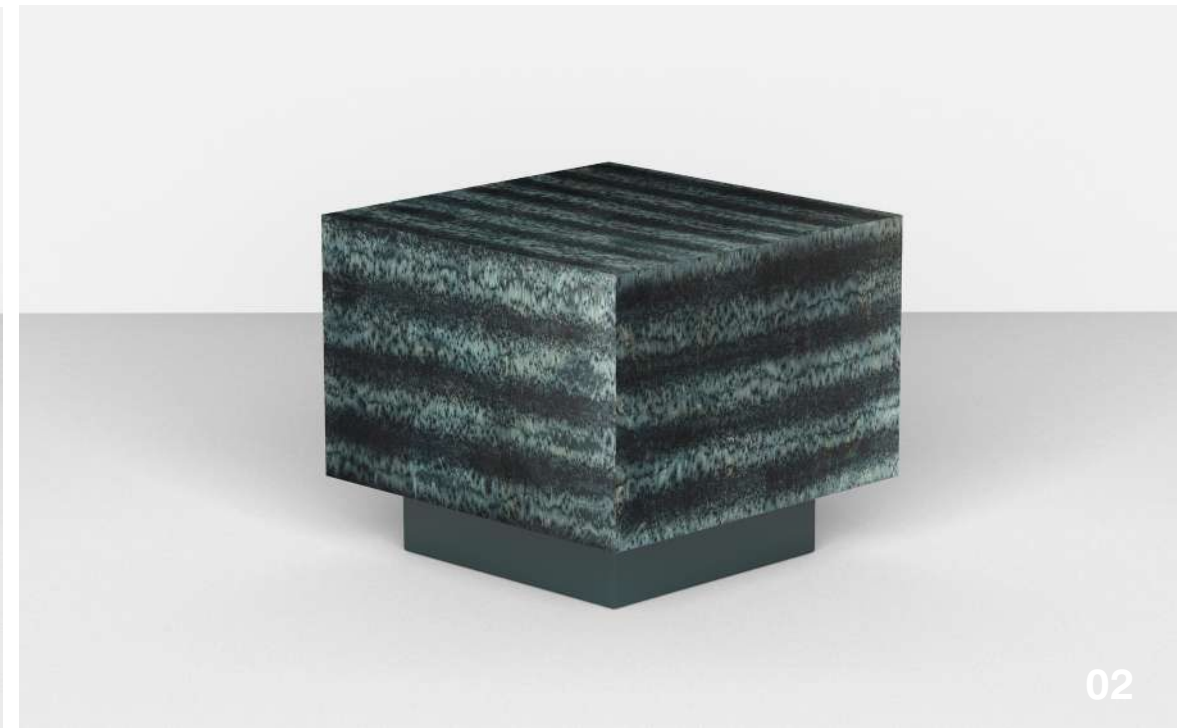
Sprinkle pattern is based on small salt crystals. Salt is randomly spread on the surface.

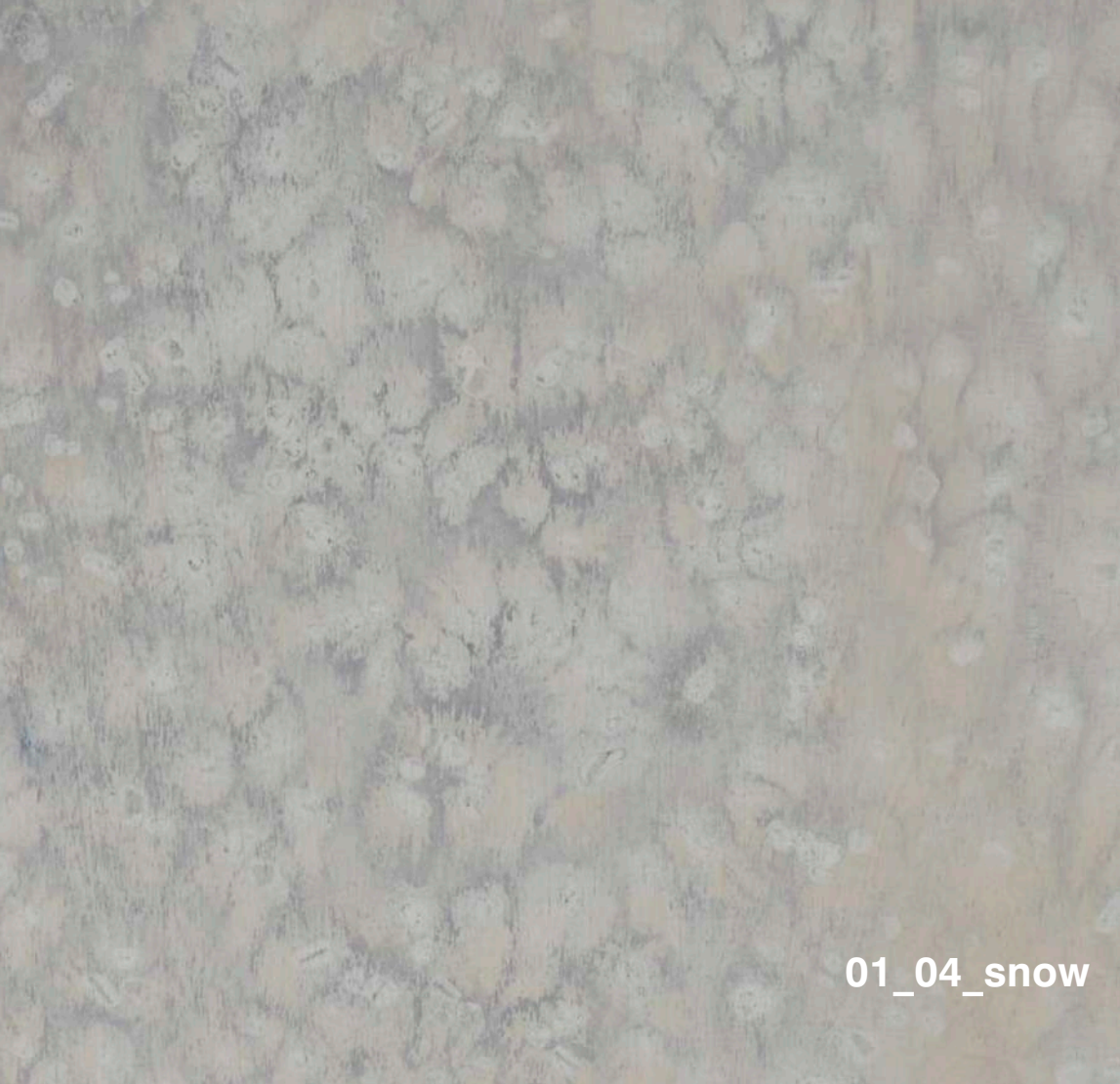
05_GRID

Grid pattern is based on small stone salt. Salt is filled in a funnel and the comb structure is drawn by hand.

06_ROCK

Rock pattern is based on big chunks of salt. Salt crystals are randomly spread on the surface.





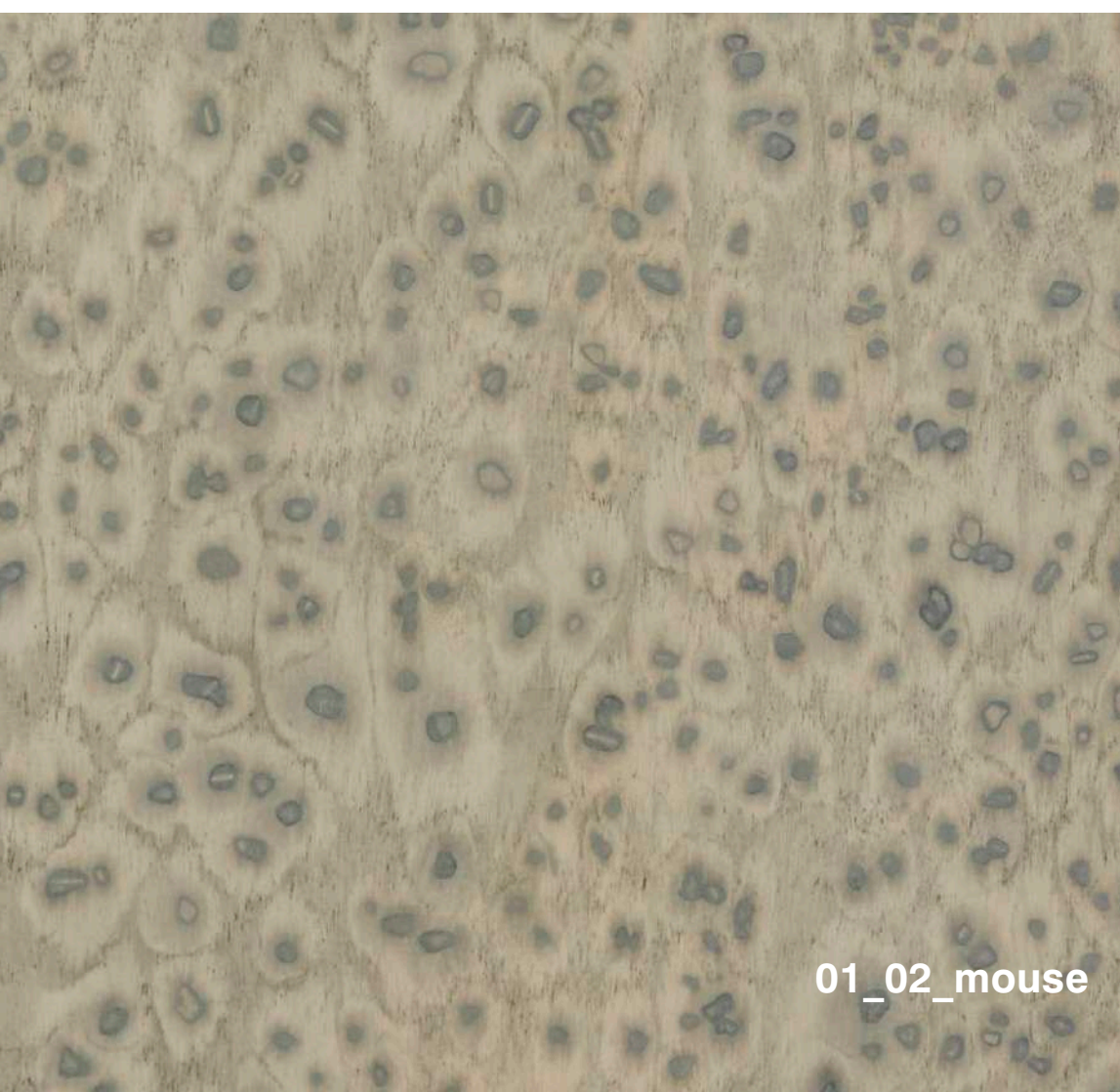
01_04_snow



05_32_pale grey



04_16_black panther



01_02_mouse



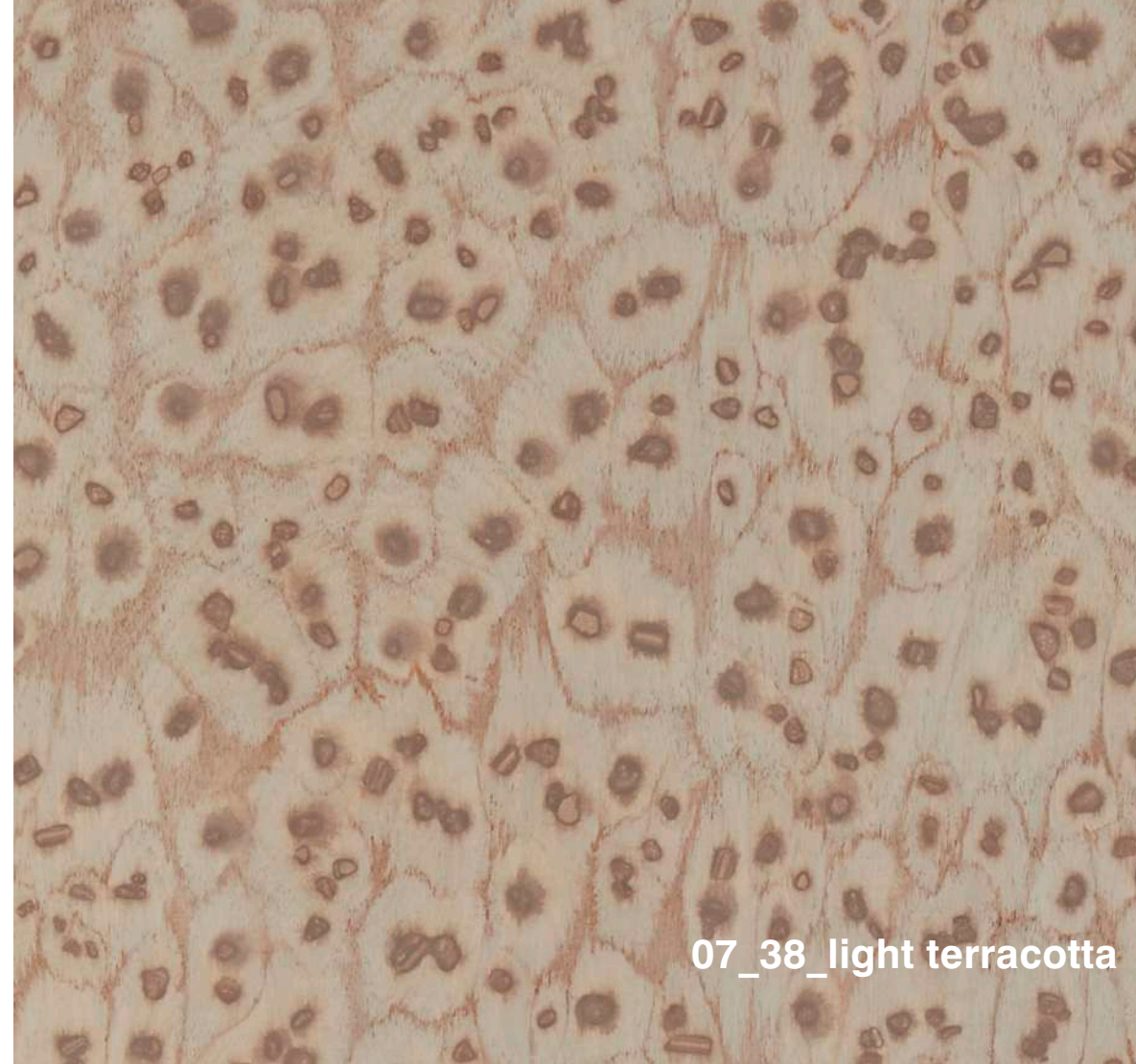
06_40_black yeti



06_17_panther



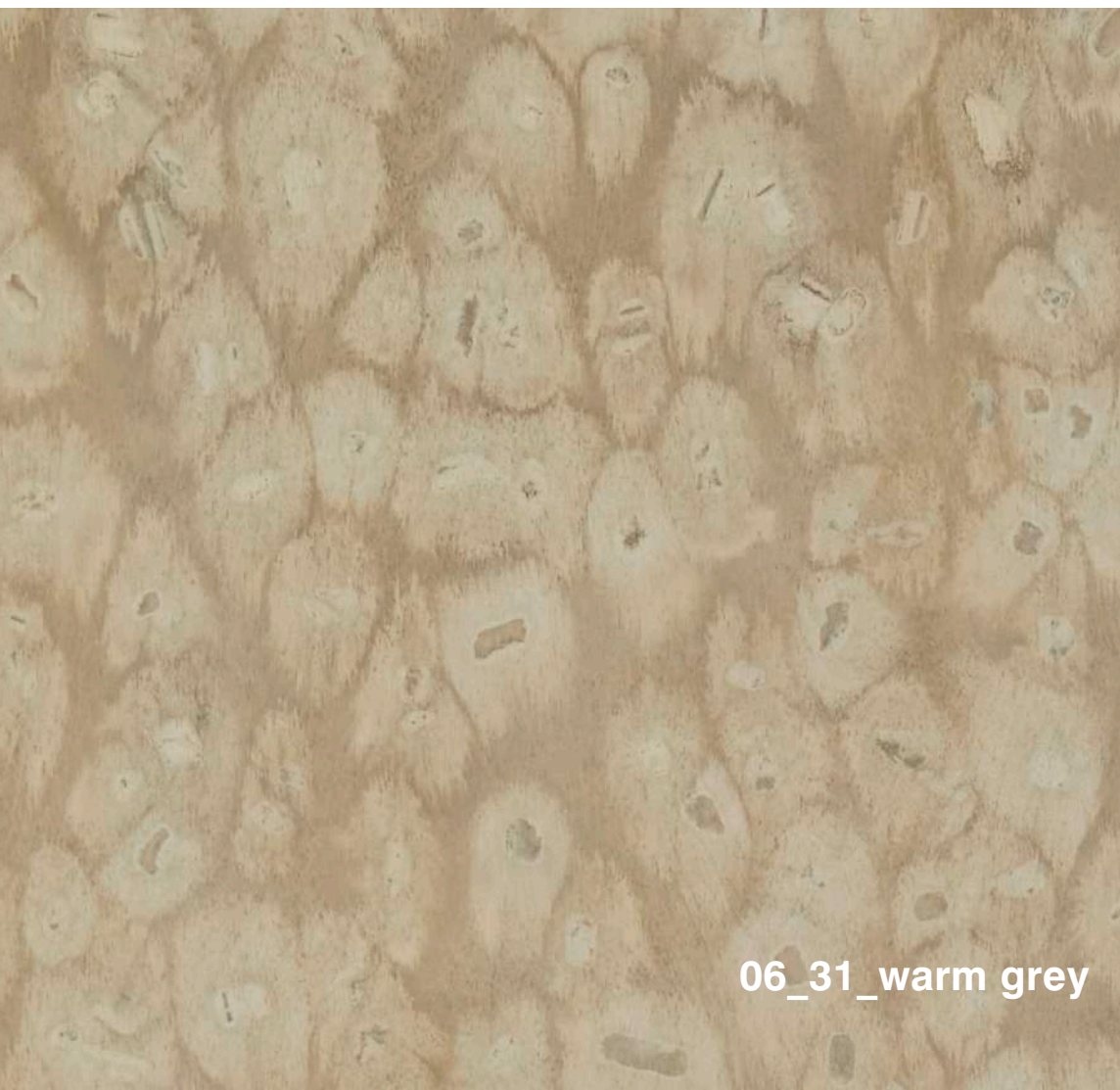
07_36_mauve



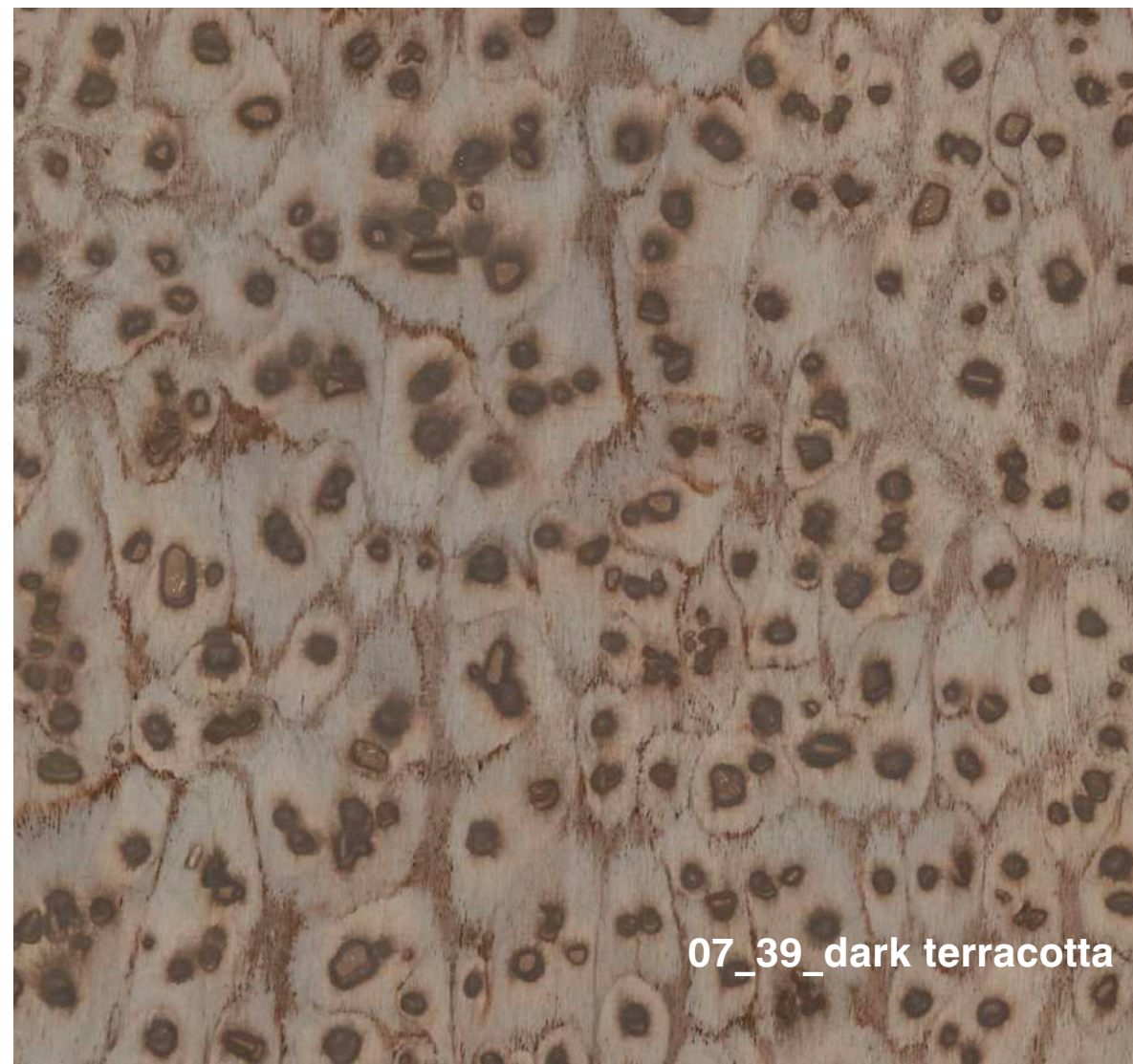
07_38_light terracotta



06_30_bear



06_31_warm grey



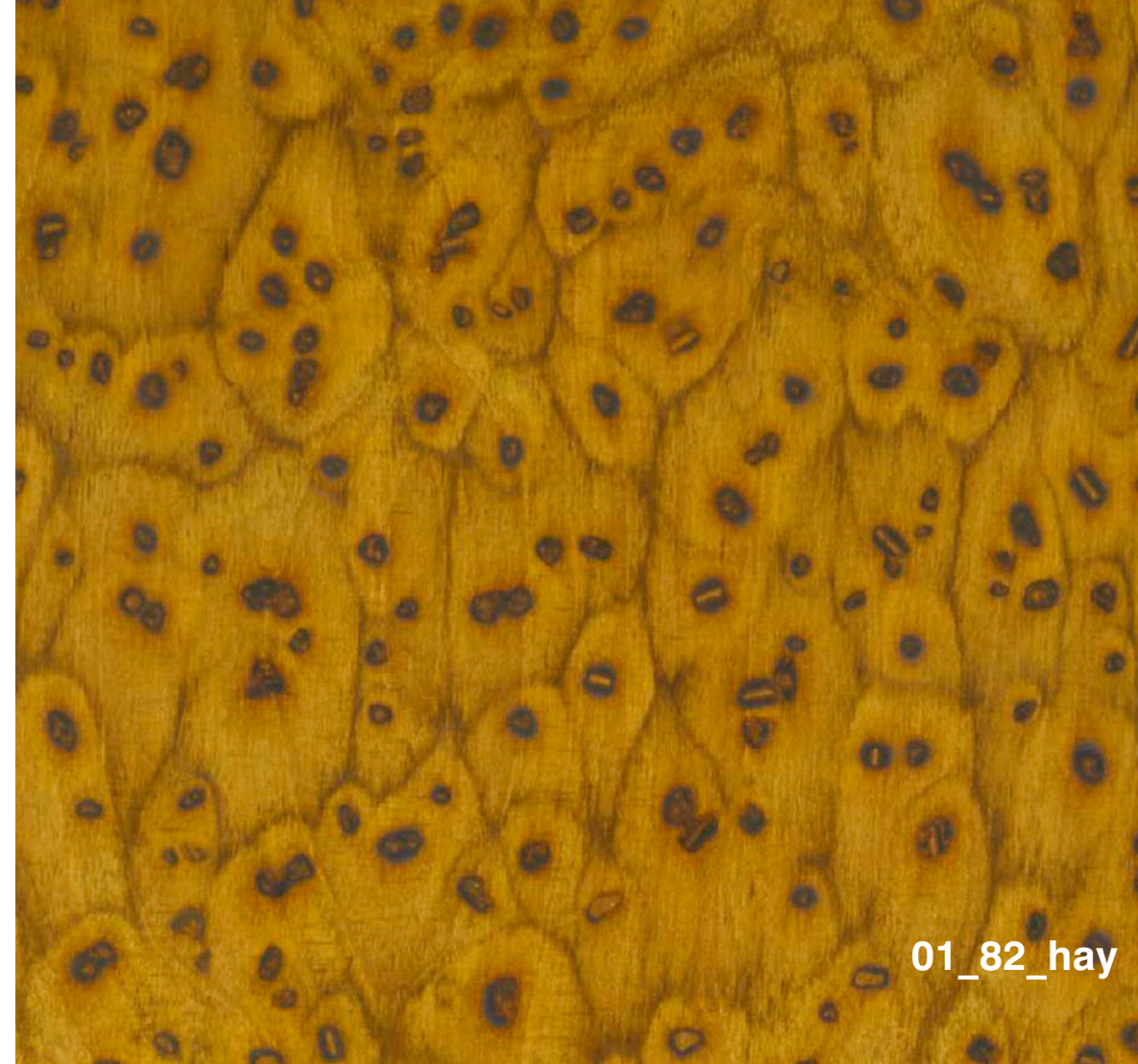
07_39_dark terracotta



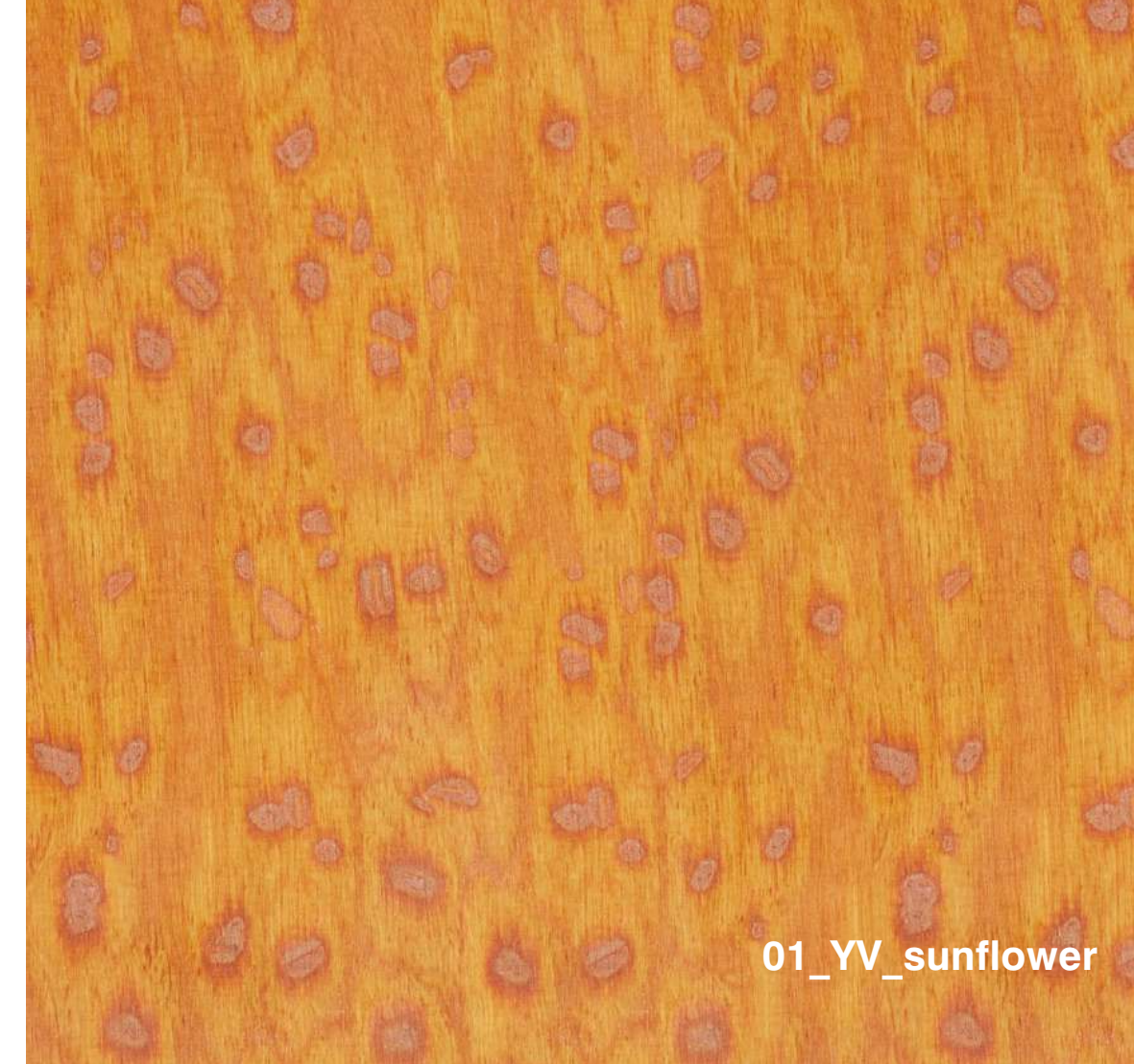
06_23_burned



06_20_lemonade



01_82_hay



01_YV_sunflower



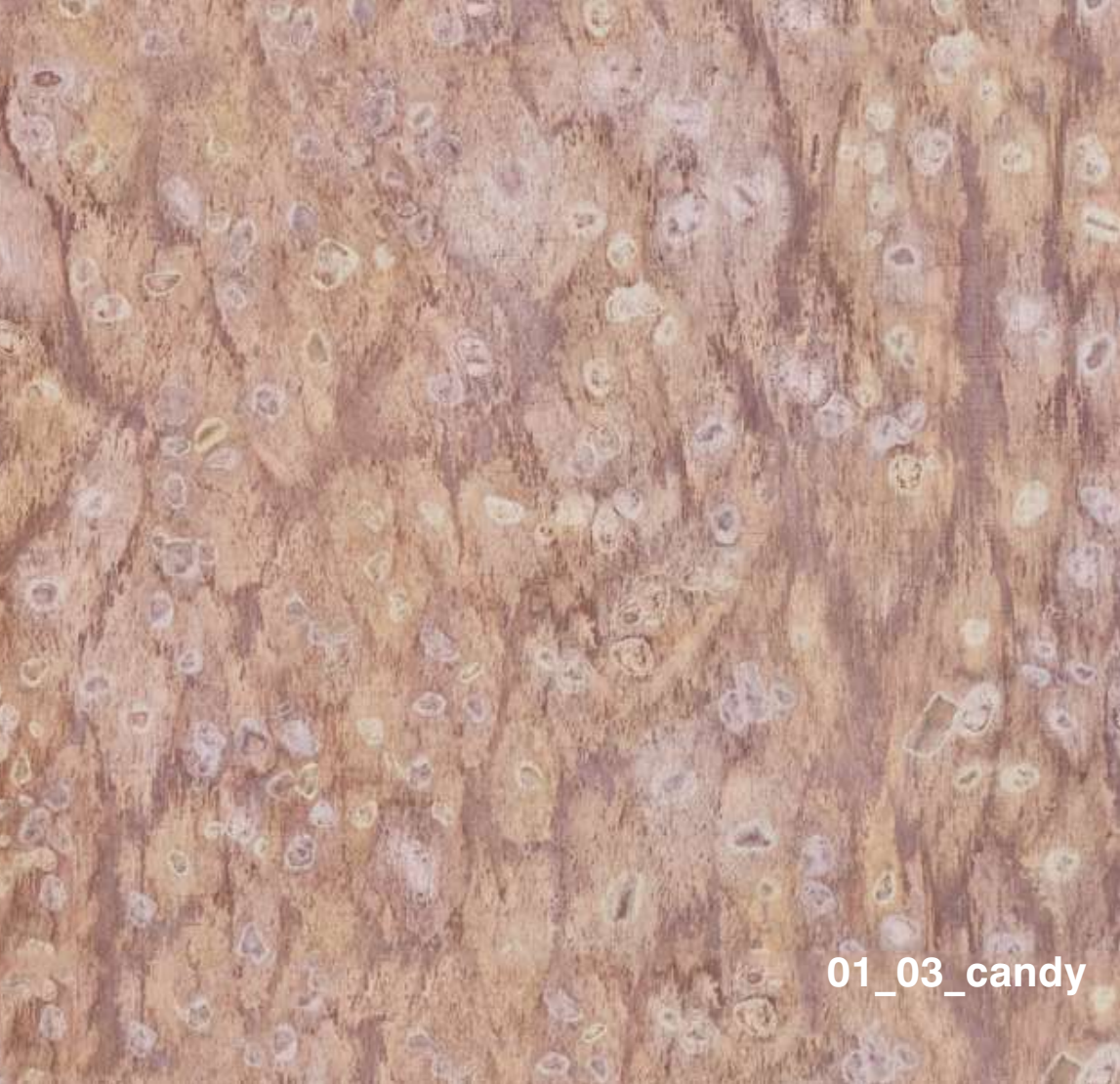
06_28_giraffe



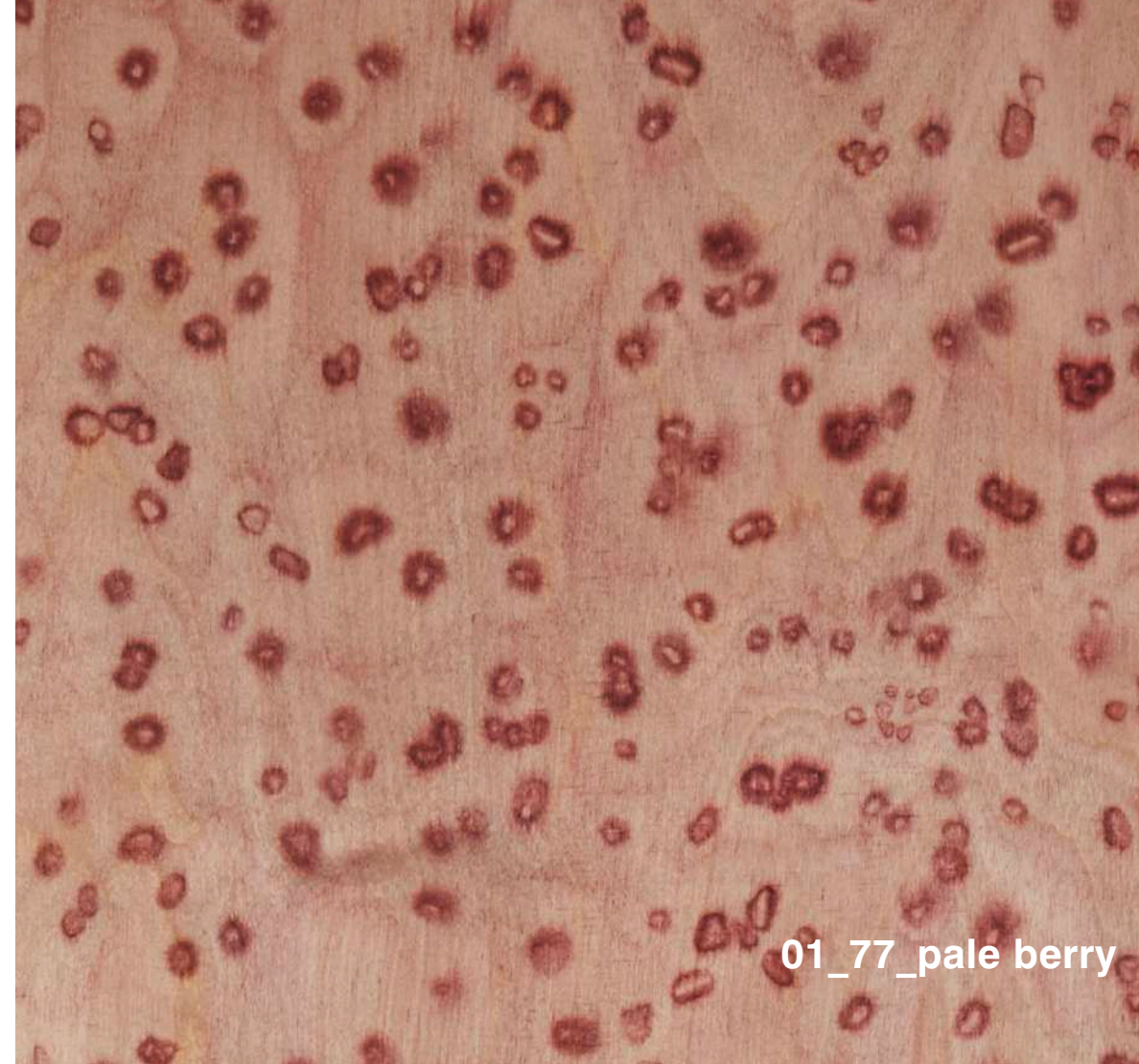
07_29_hazel



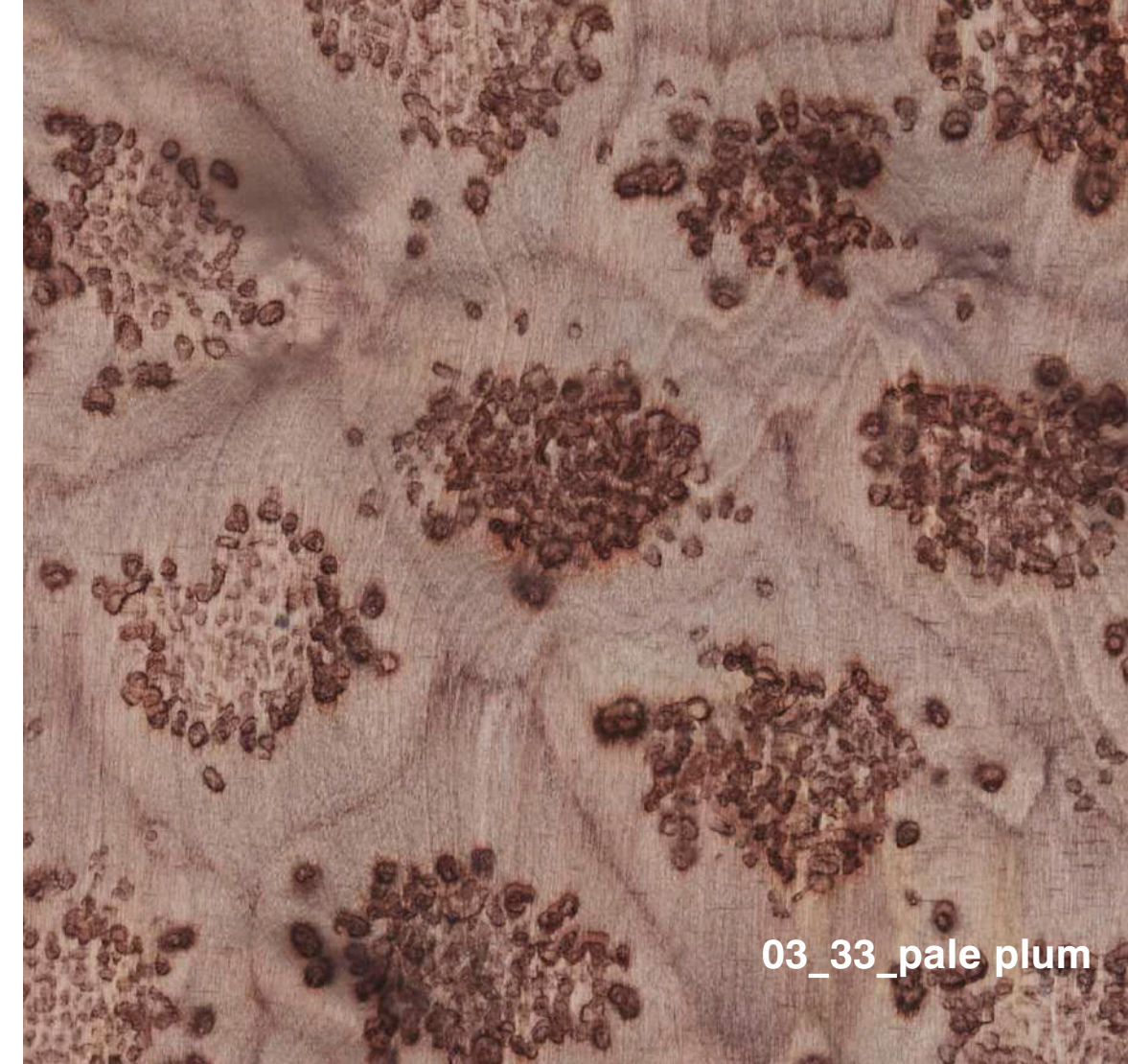
06_25_red_finch



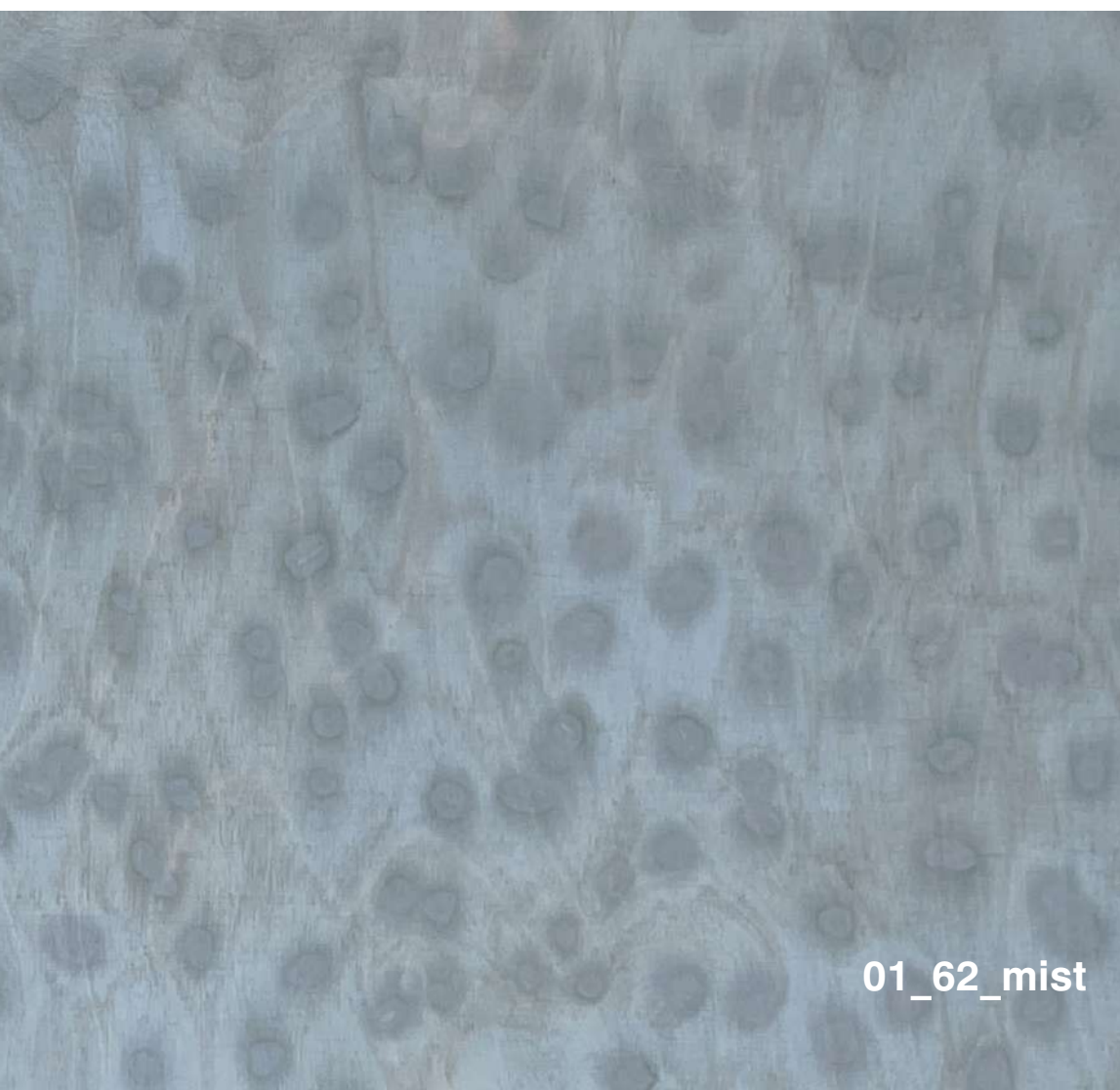
01_03_candy



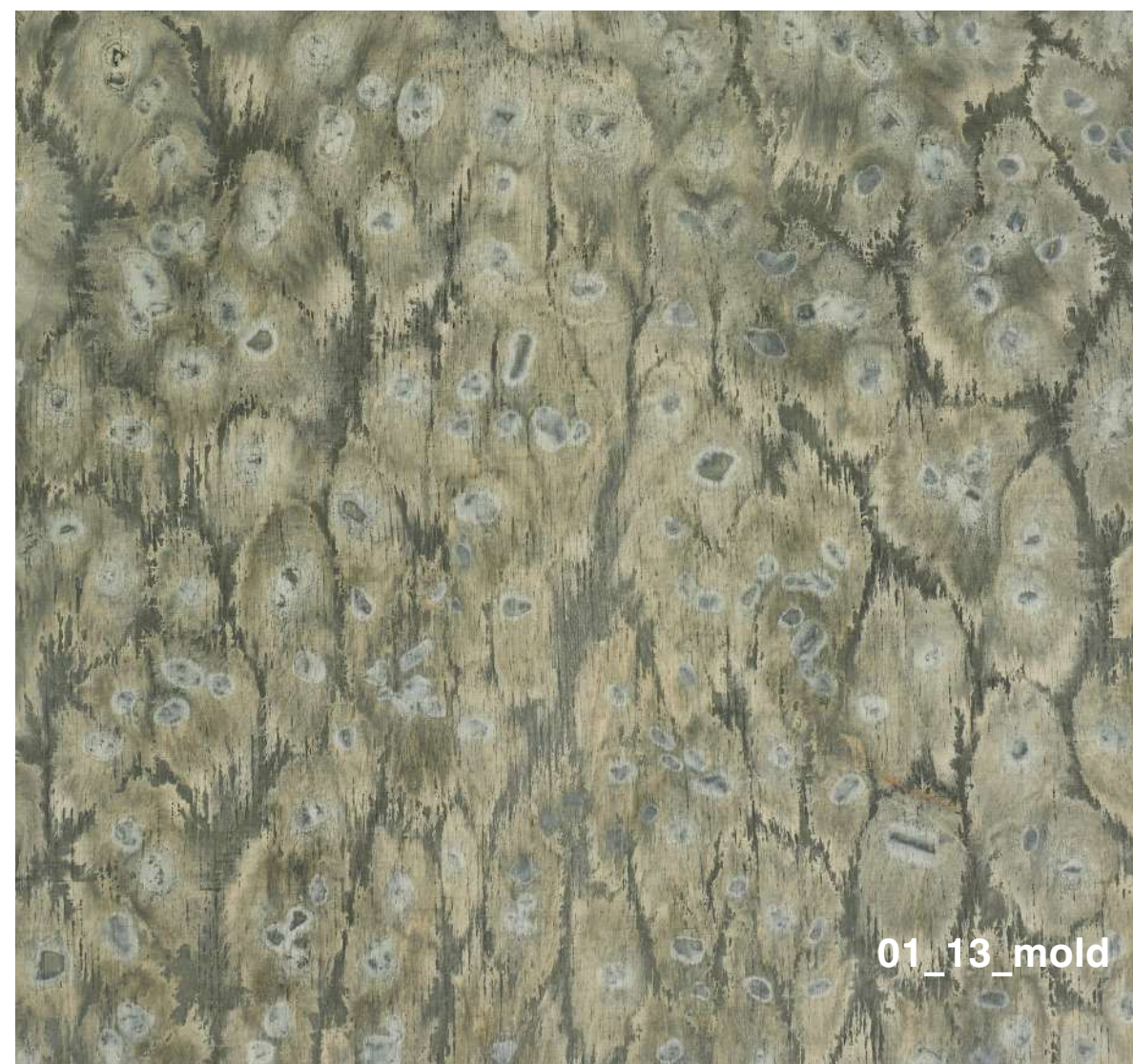
01_77_pale berry



03_33_pale plum



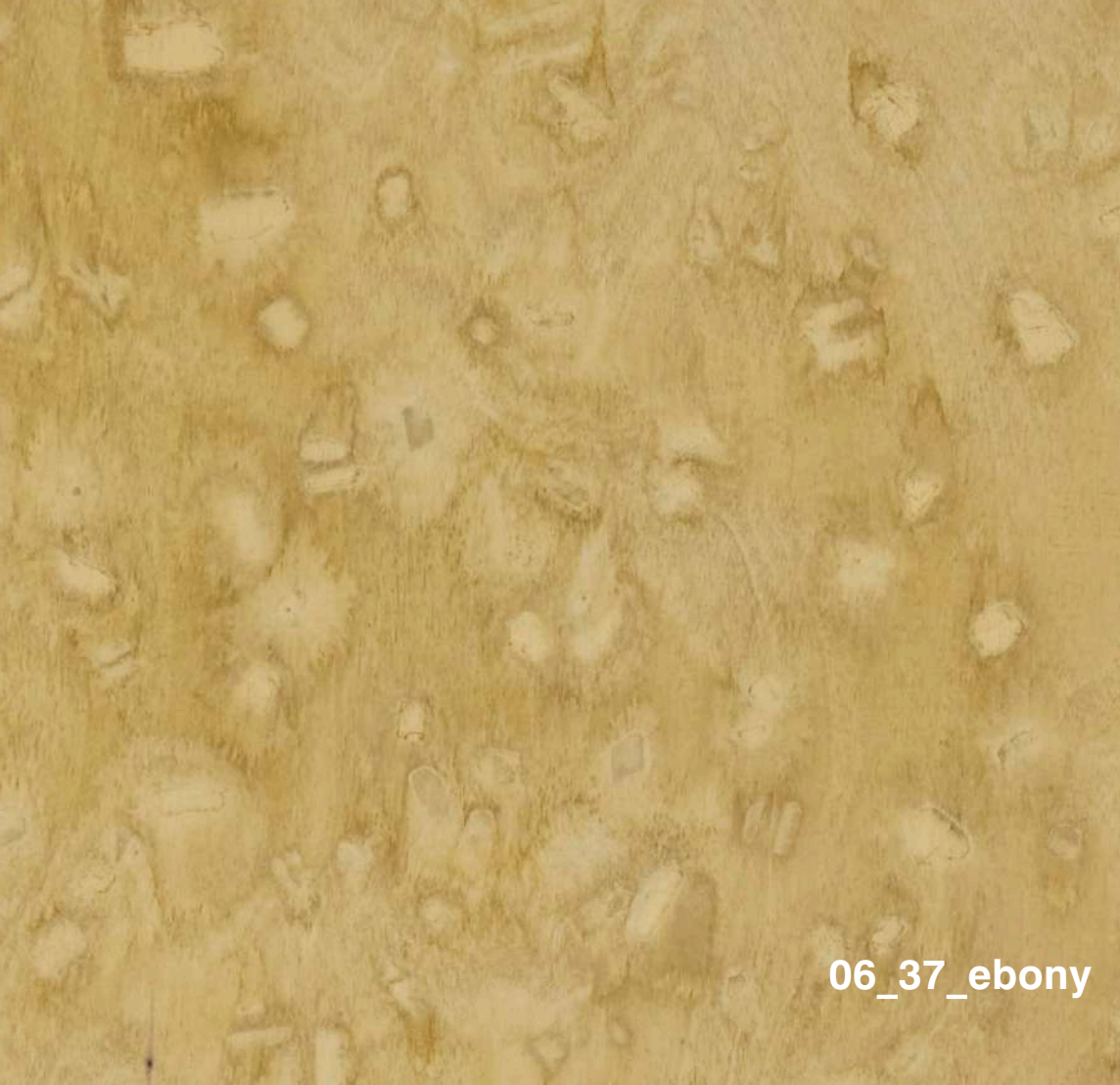
01_62_mist



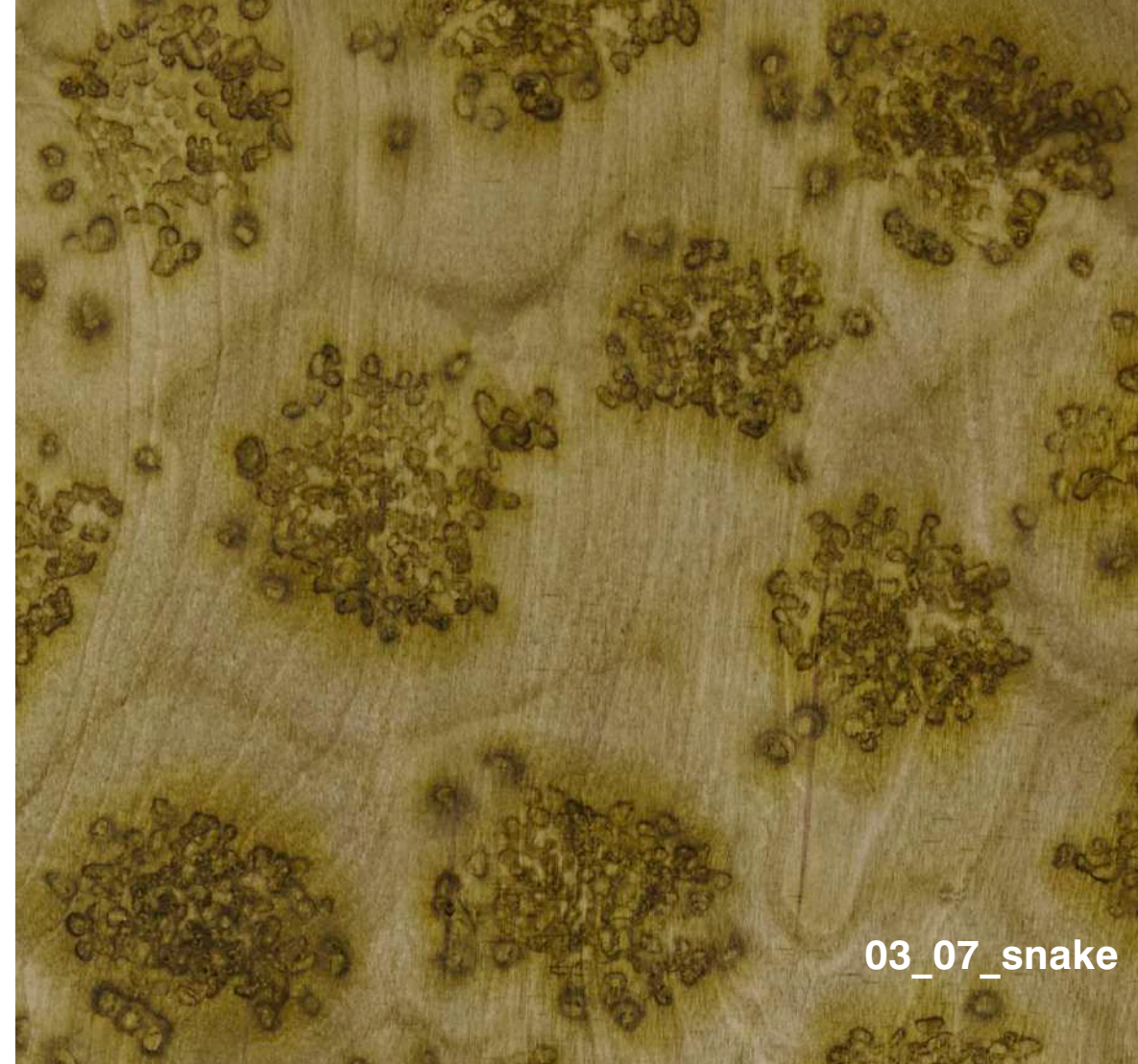
01_13_mold



05_75_reptile



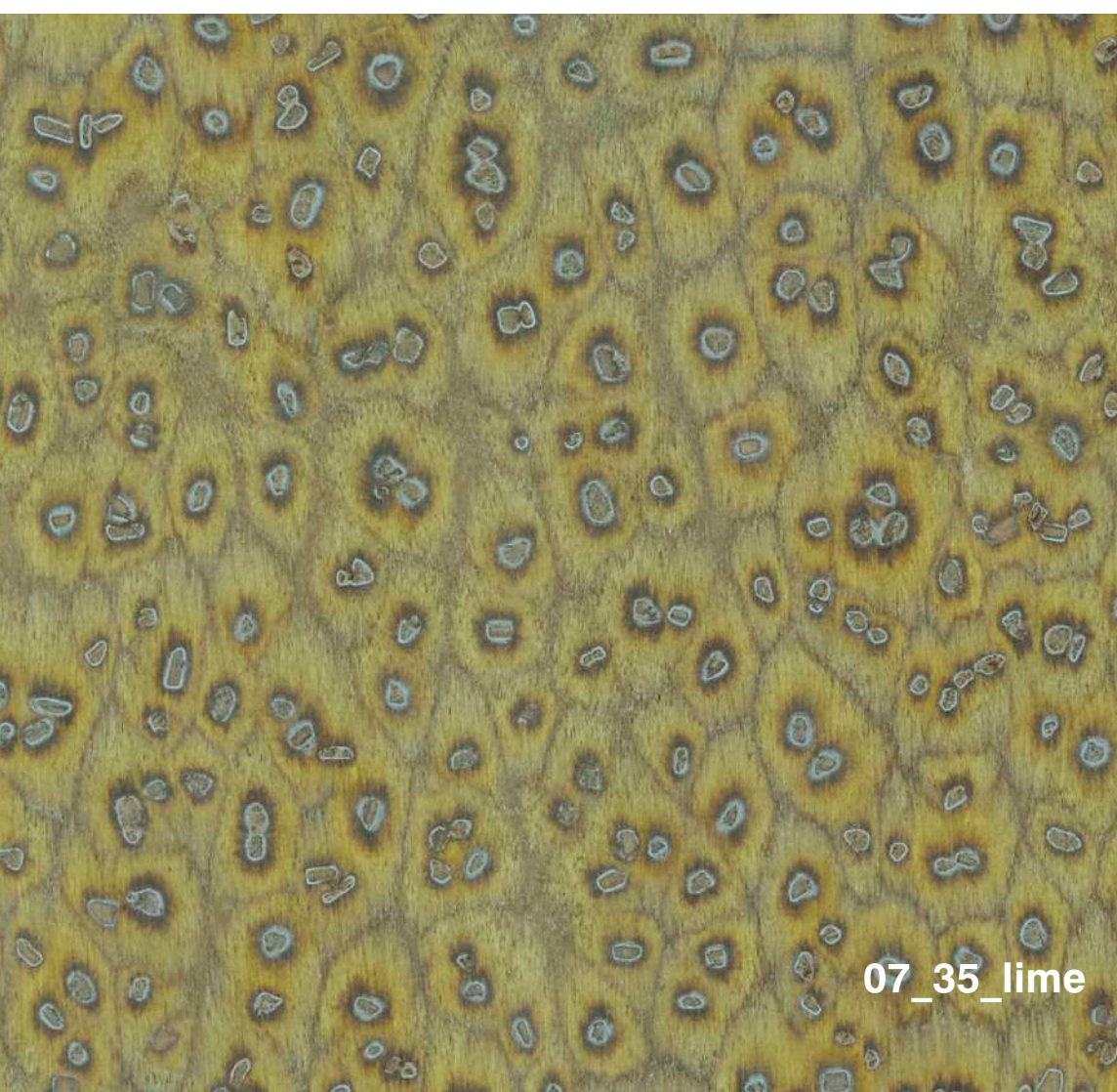
06_37_ebony



03_07_snake



06_07_snake



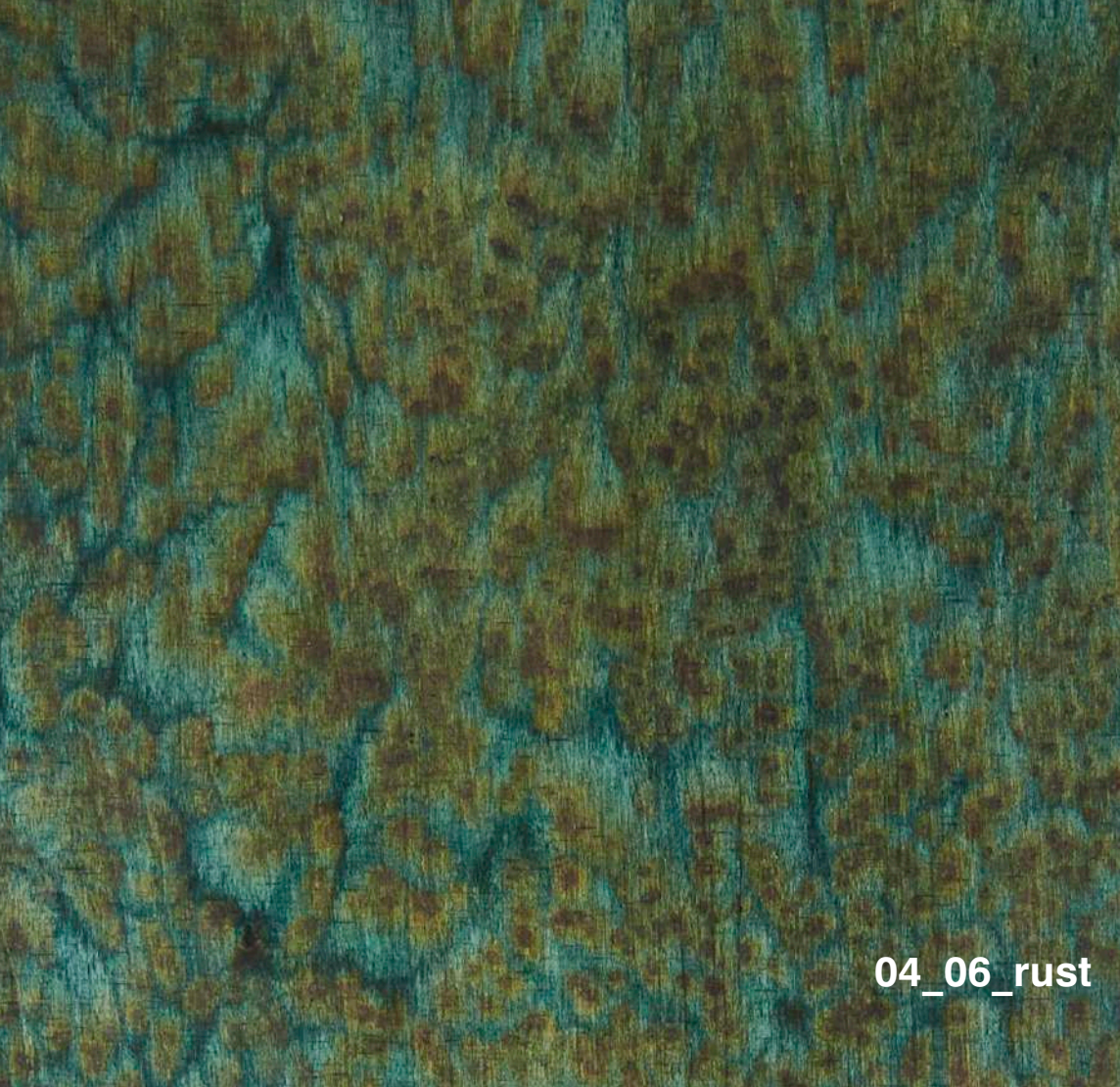
07_35_lime



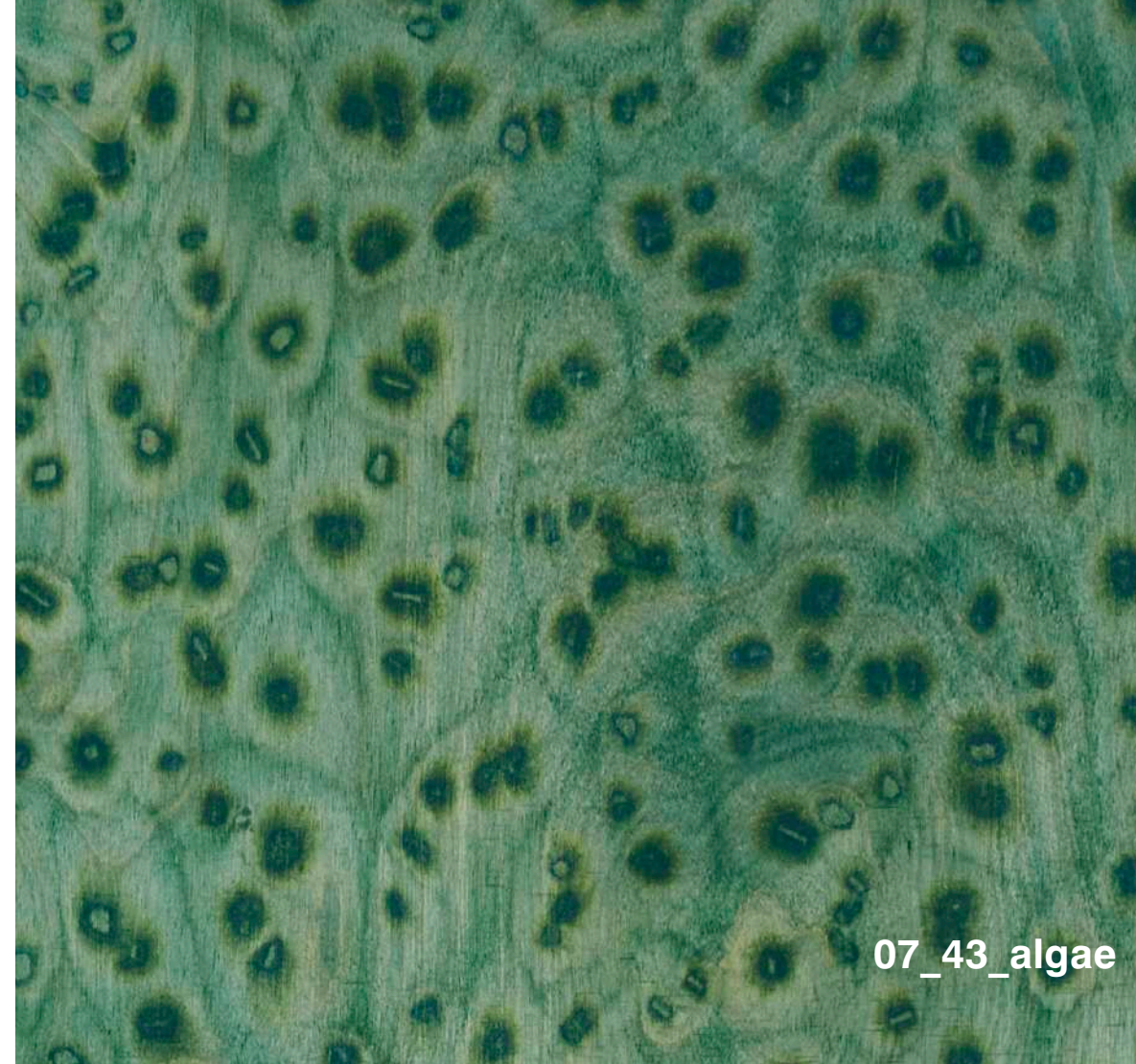
05_07_snake



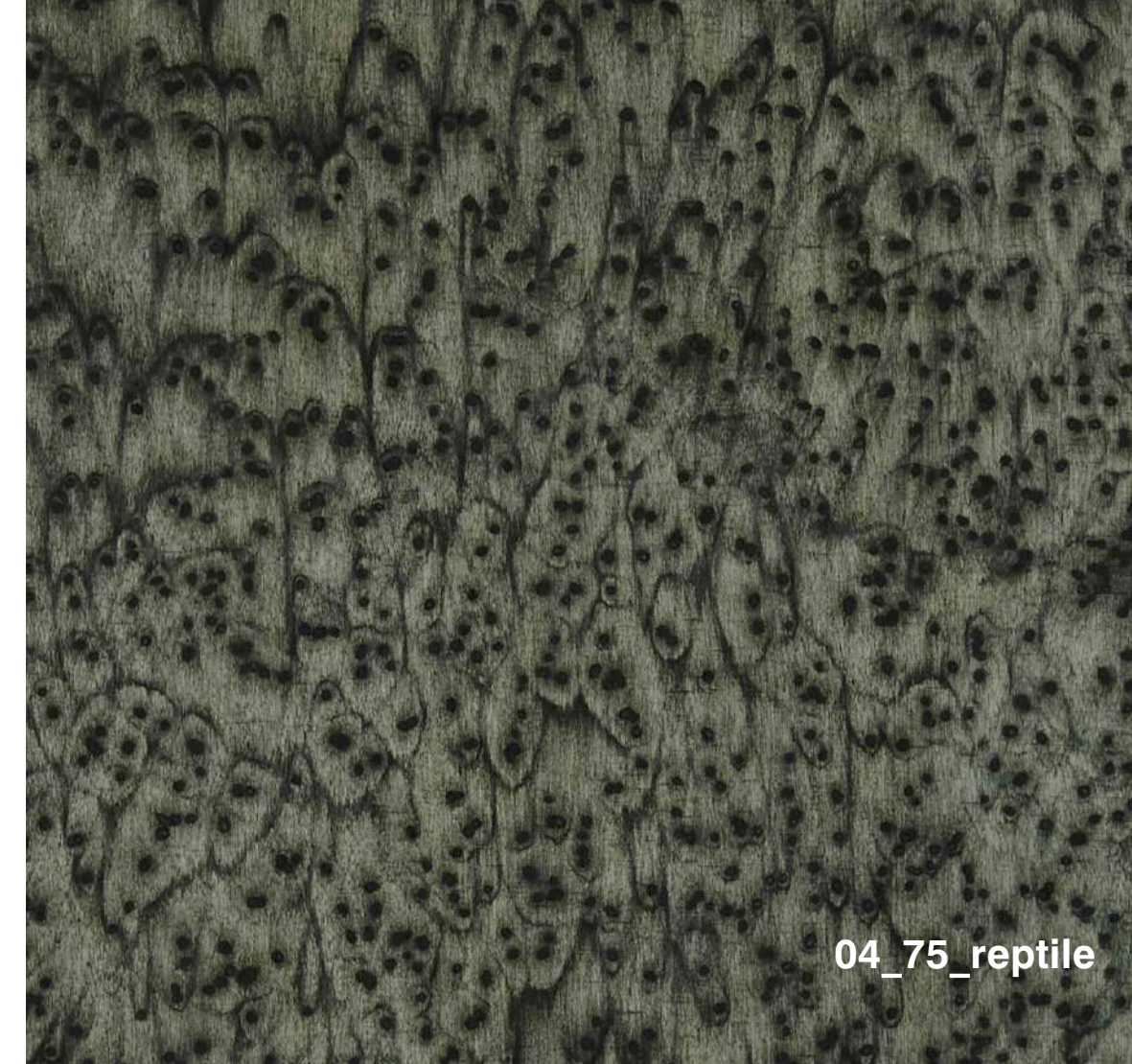
02_07 snake



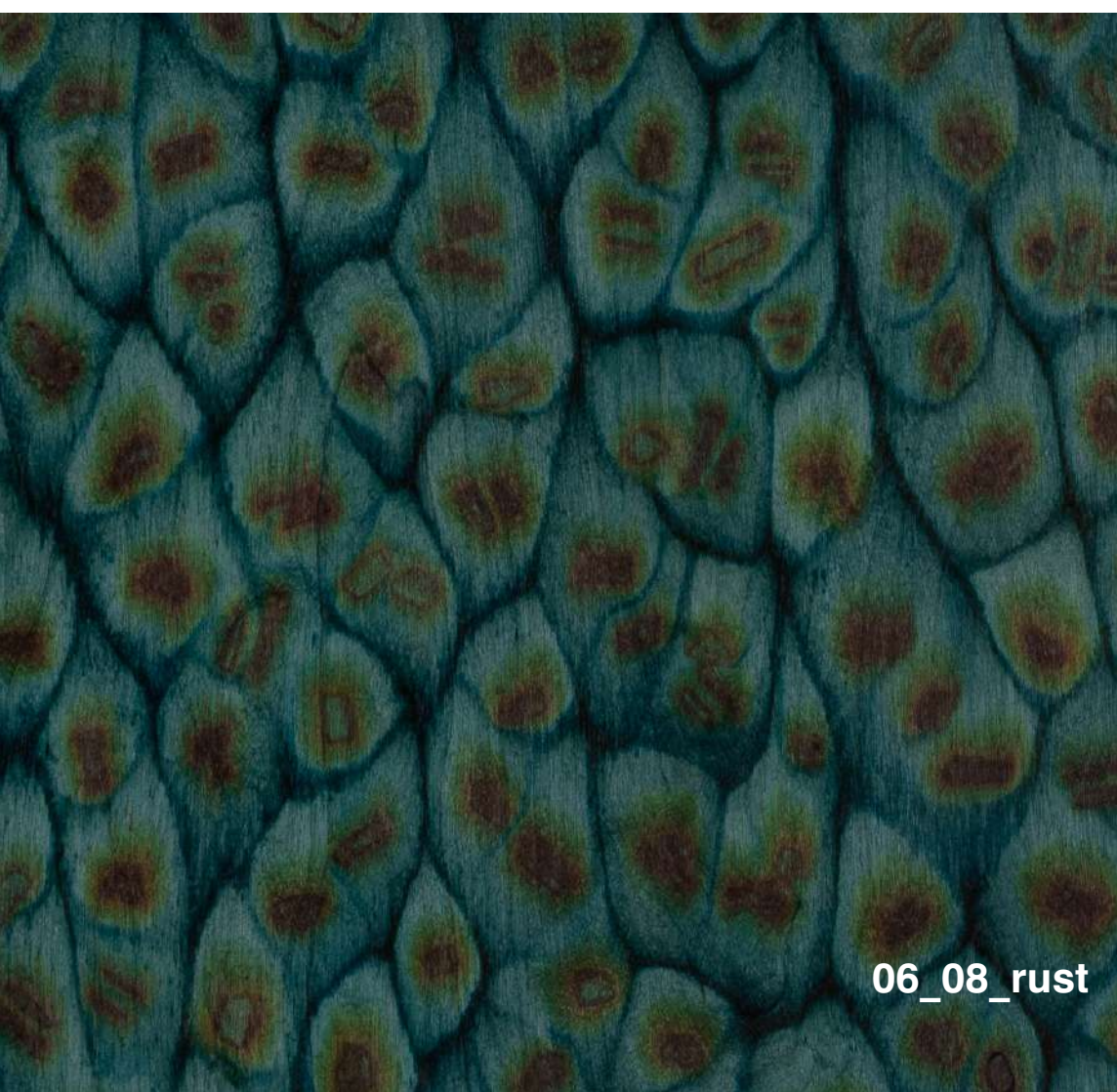
04_06_rust



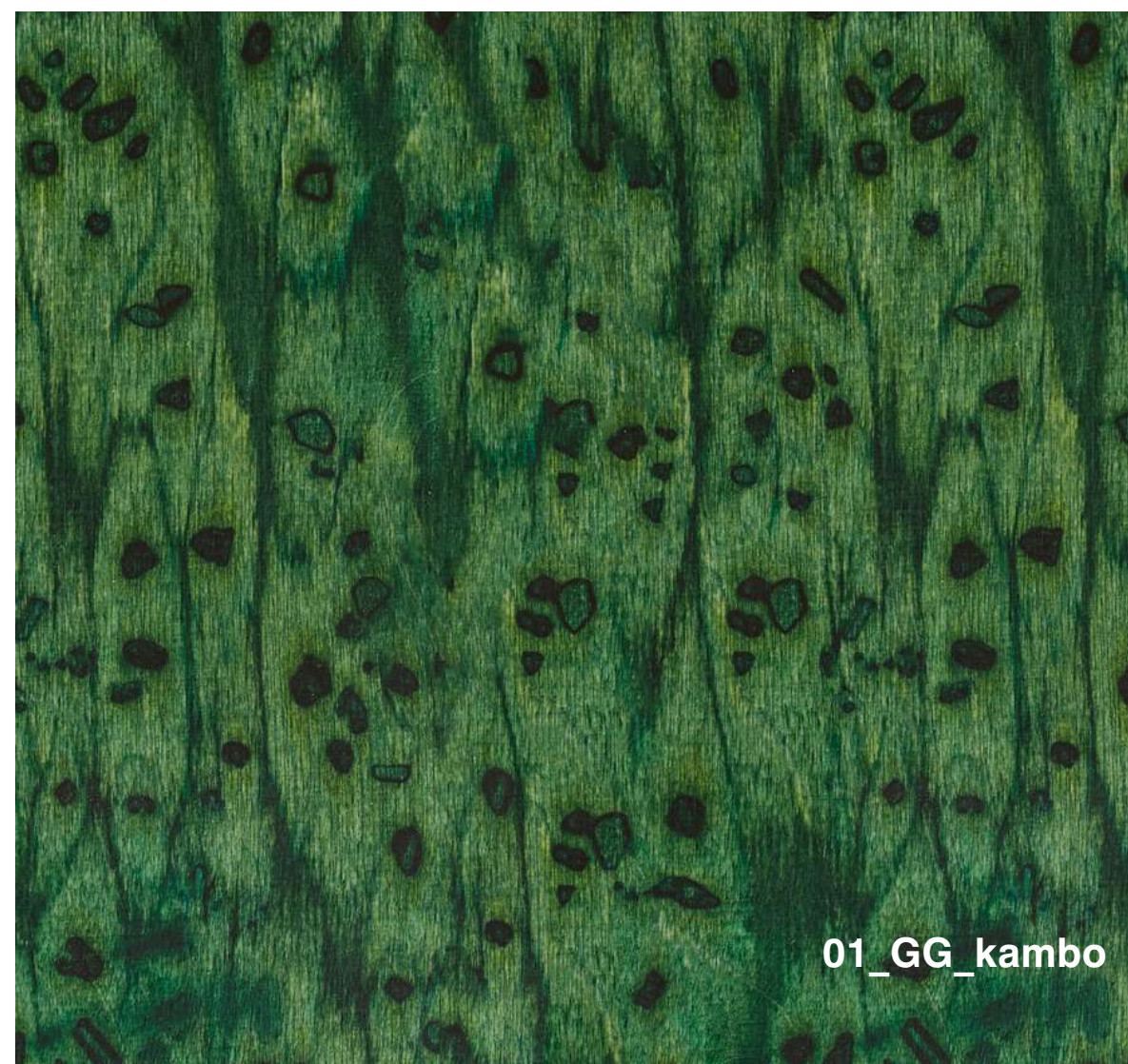
07_43_algae



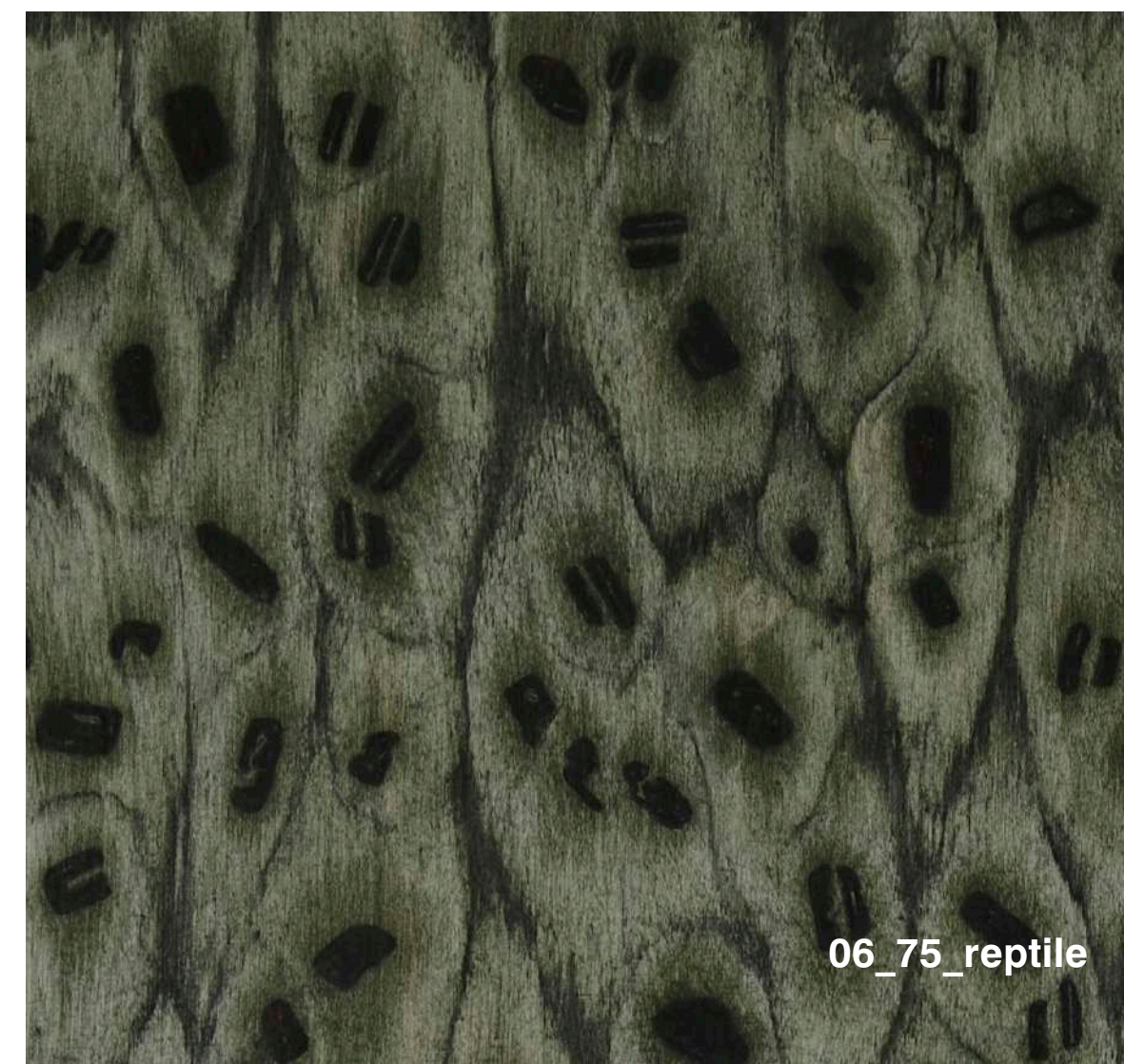
04_75_reptile



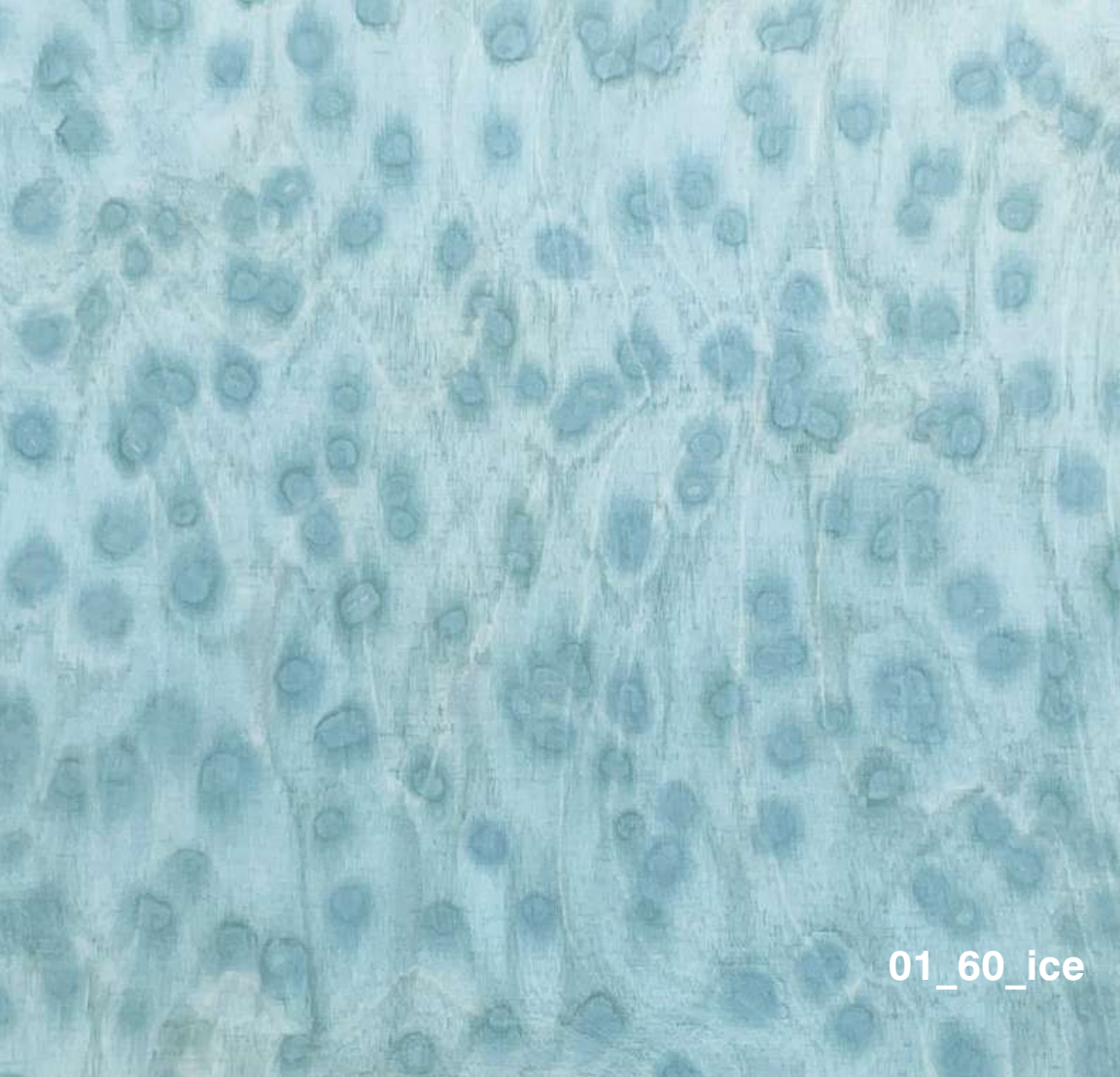
06_08_rust



01_GG_kambo



06_75_reptile



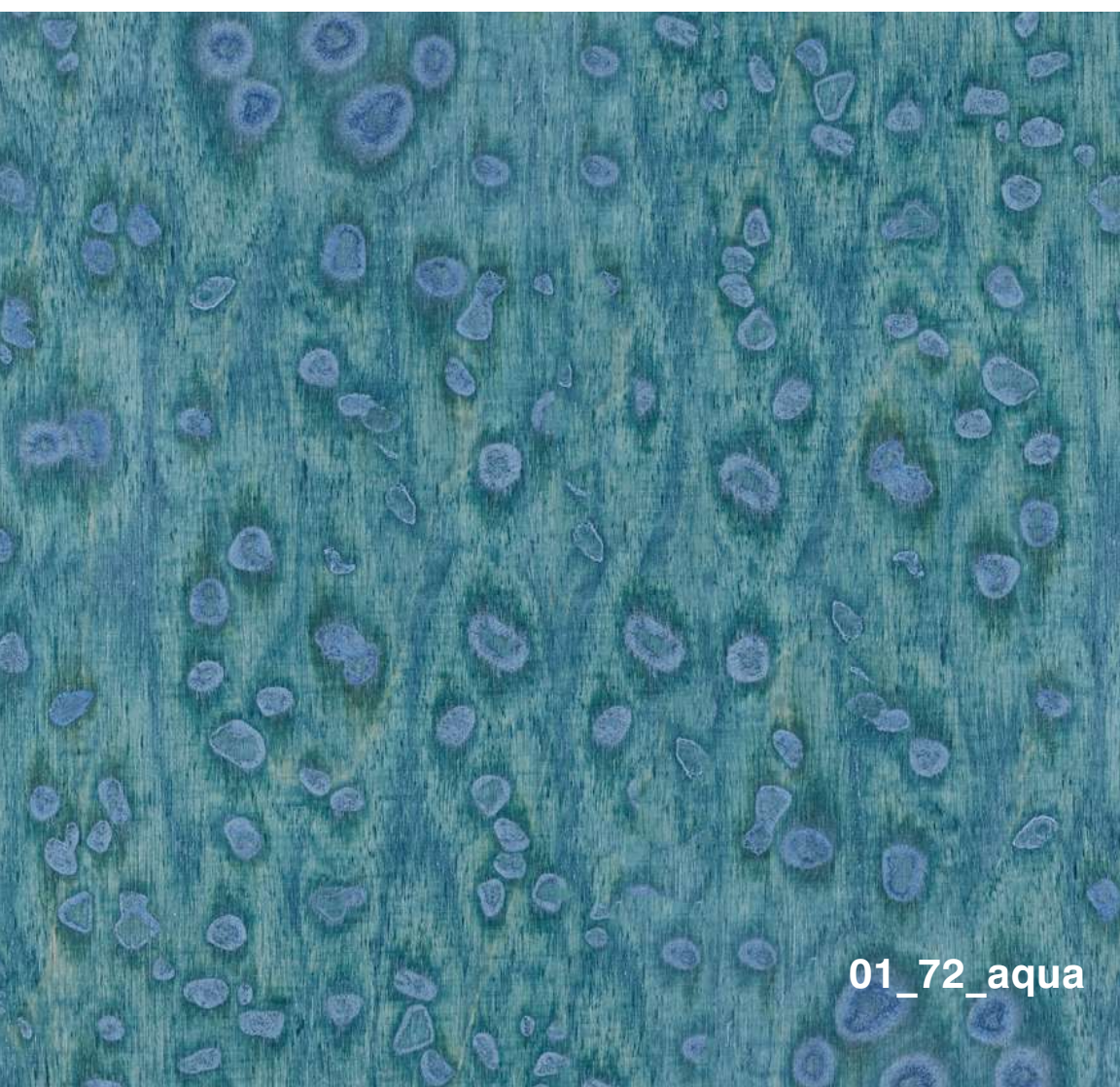
01_60_ice



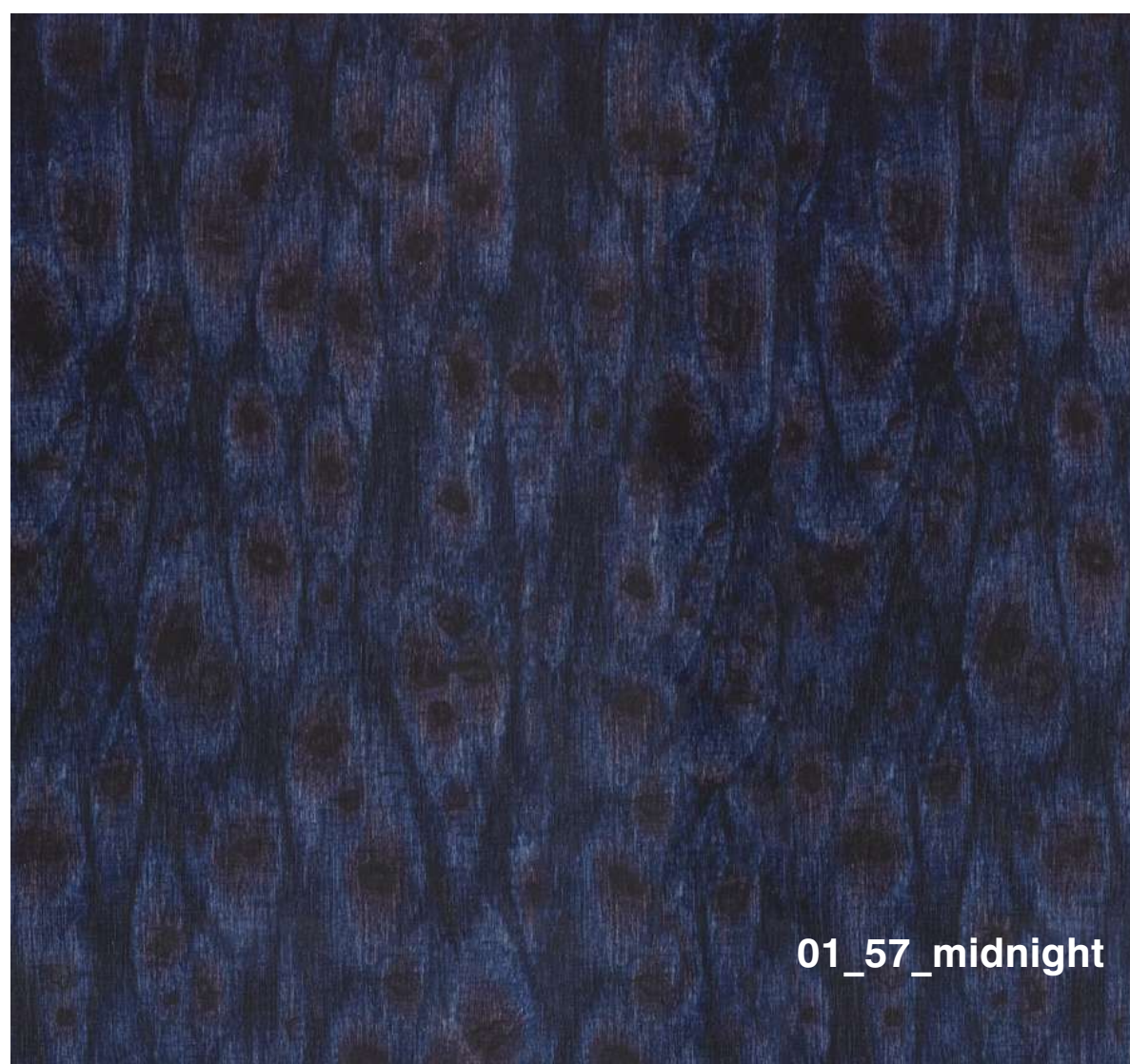
03_12_peacock



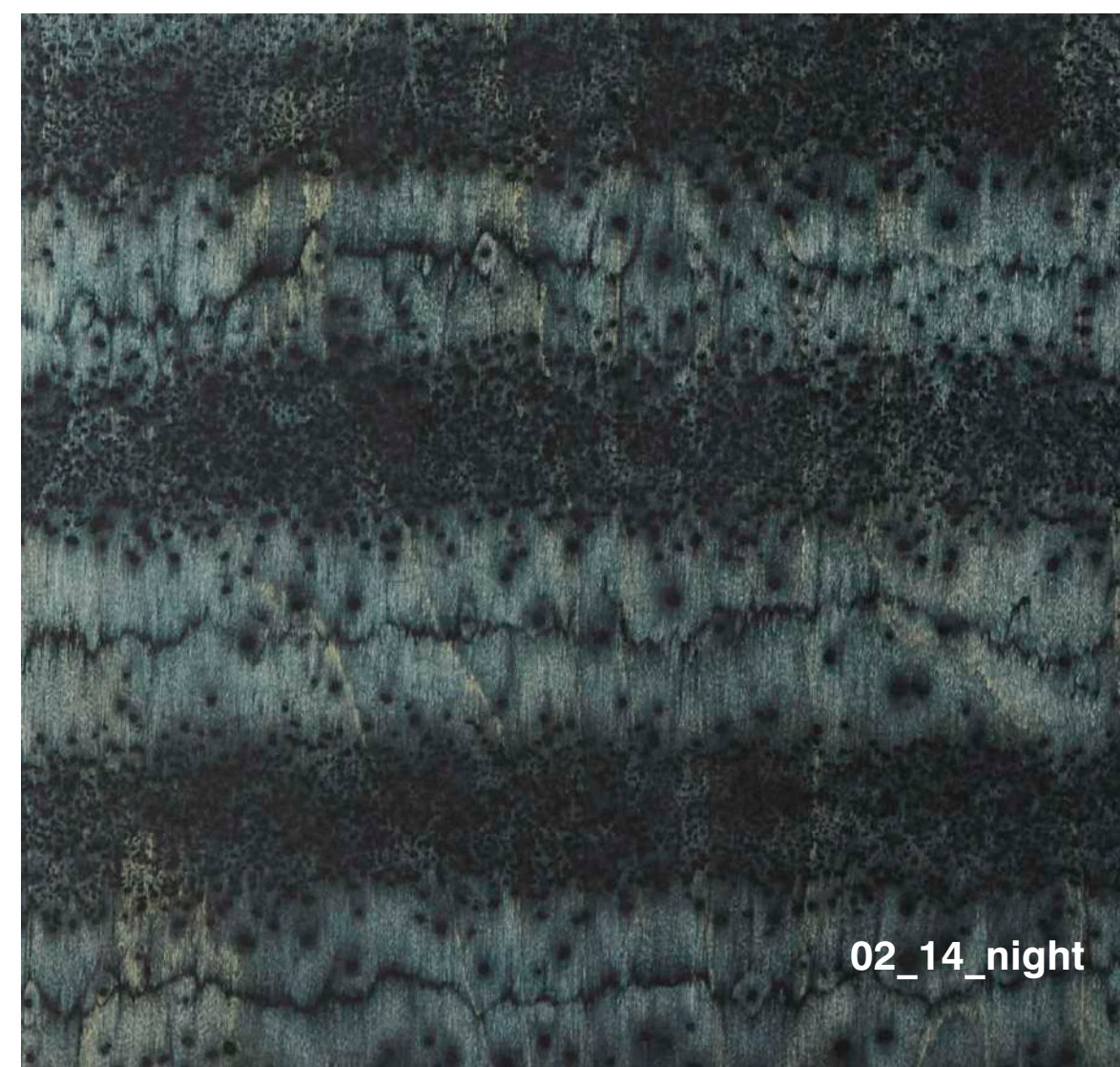
04_14_night



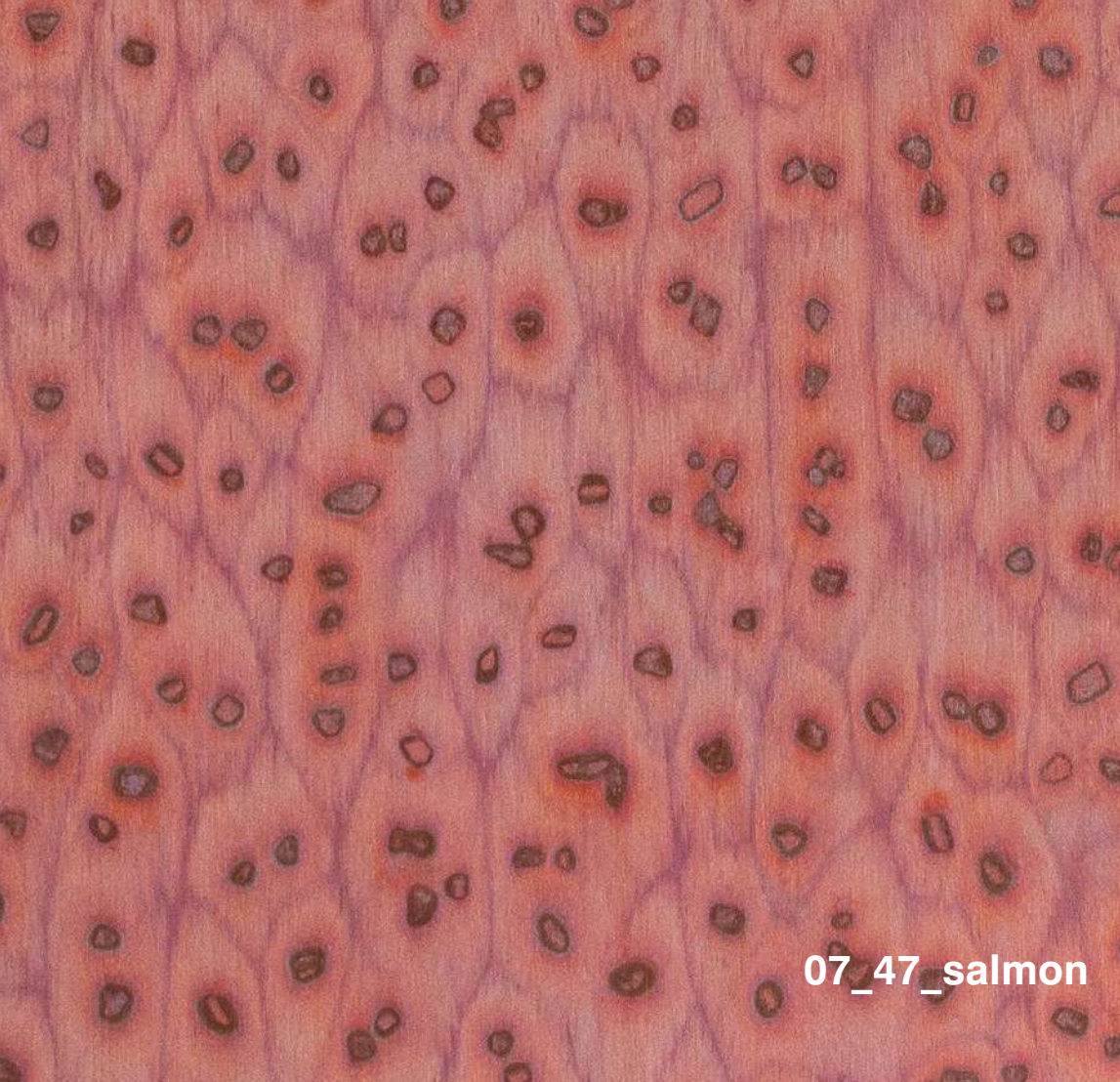
01_72_aqua



01_57_midnight



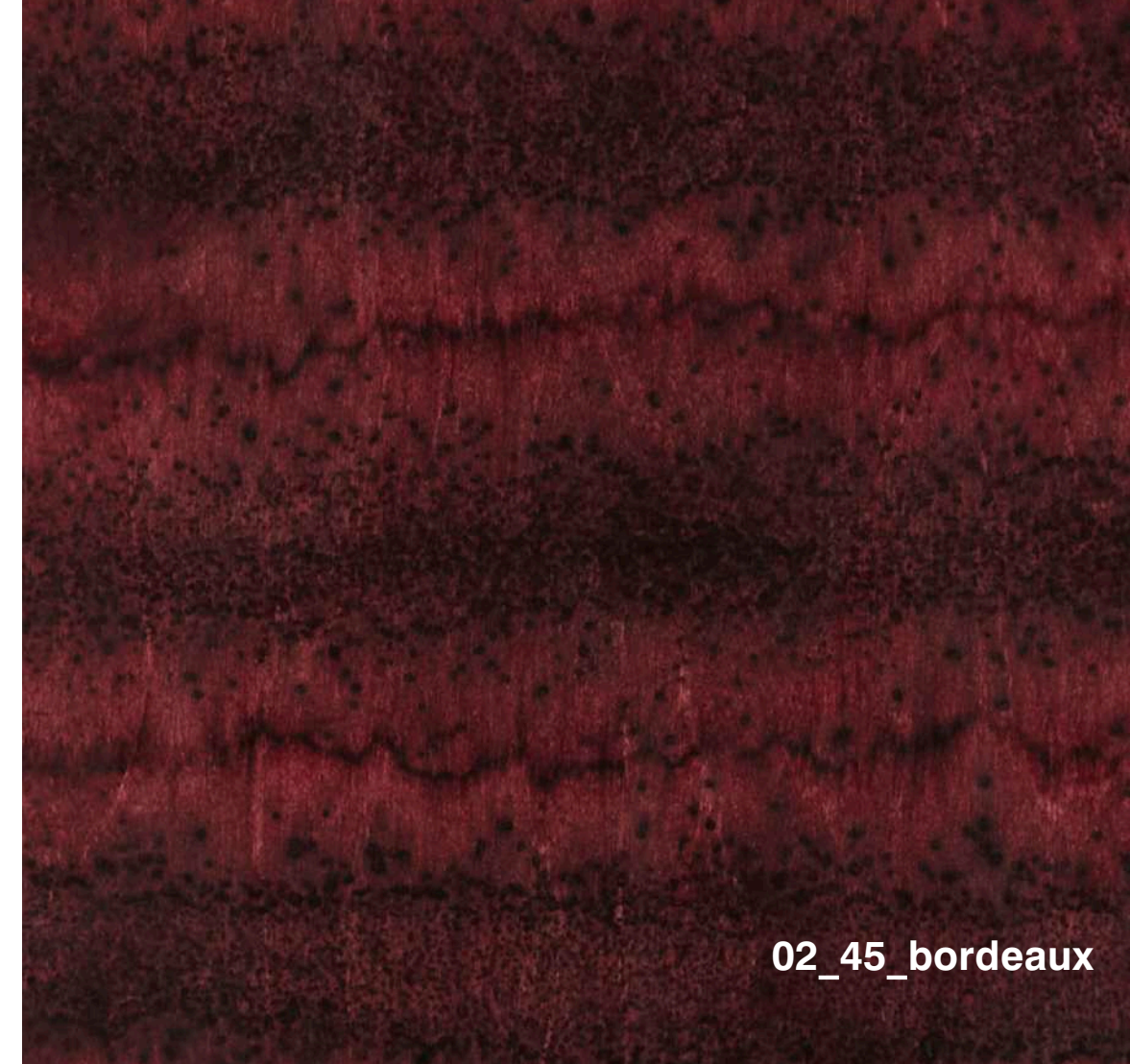
02_14_night



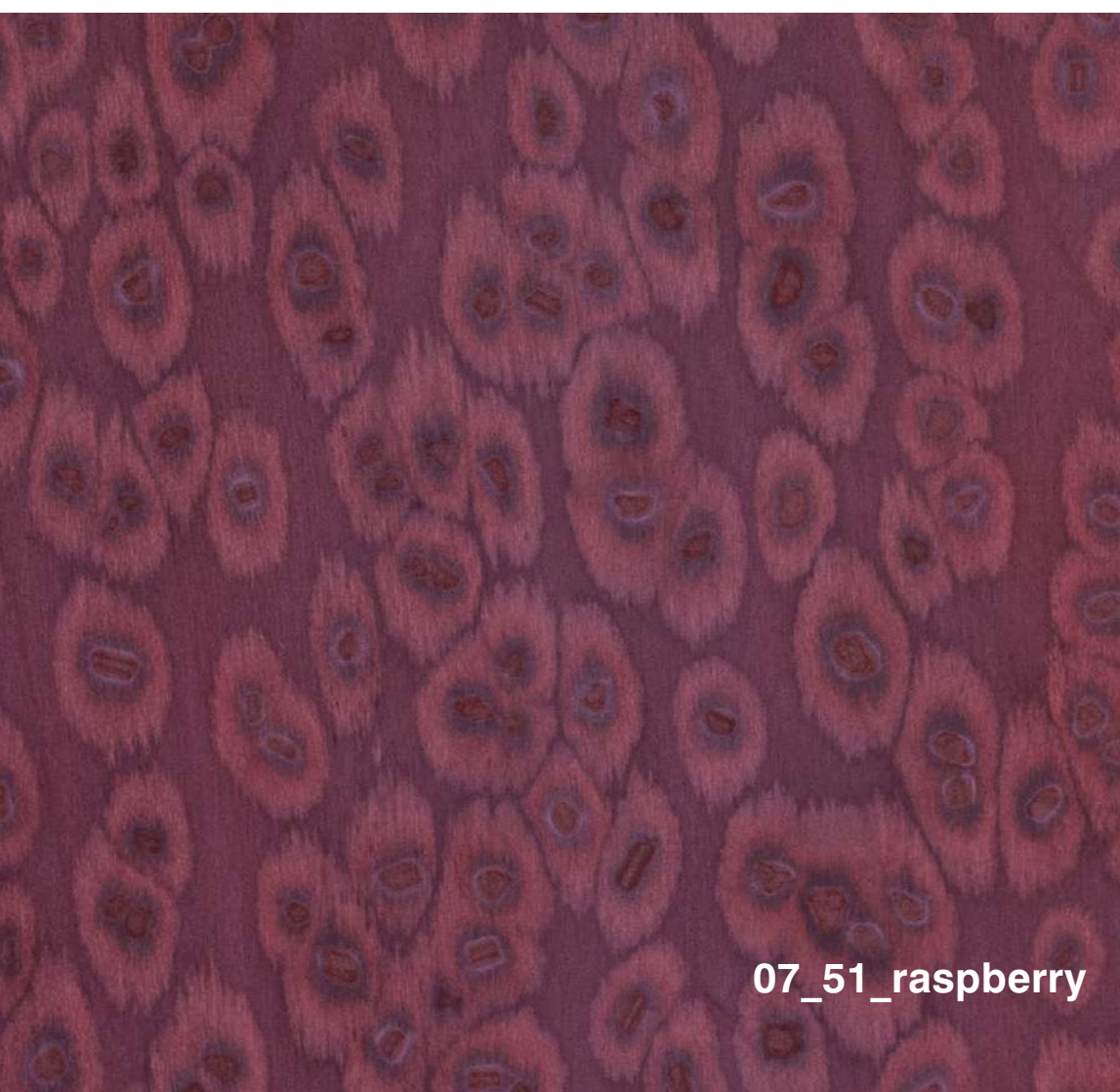
07_47_salmon



01_44_aubergine



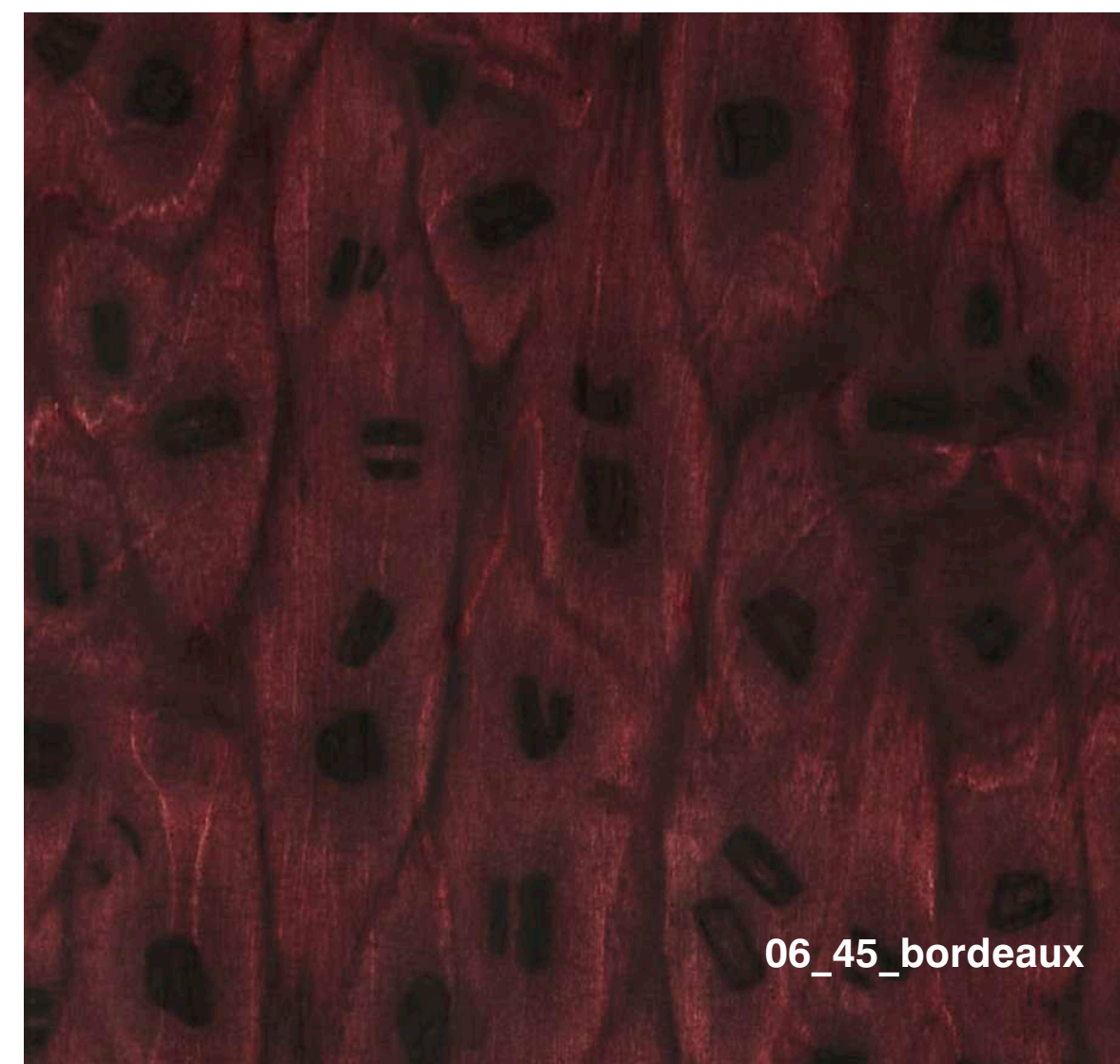
02_45_bordeaux



07_51_raspberry



06_44_aubergine

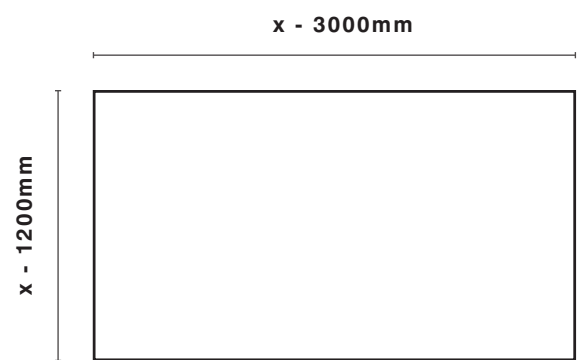


06_45_bordeaux

MATERIAL x EDGES
BOARD



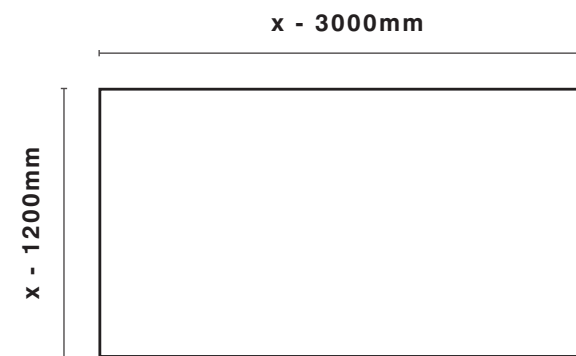
It is possible to order only the board. Edges are either raw or stained matching the colour of the OSIS SURFACE.



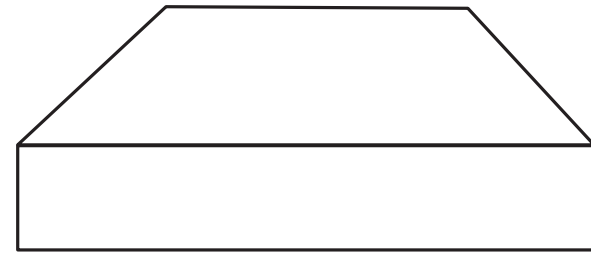
MATERIAL x EDGES
VENEER



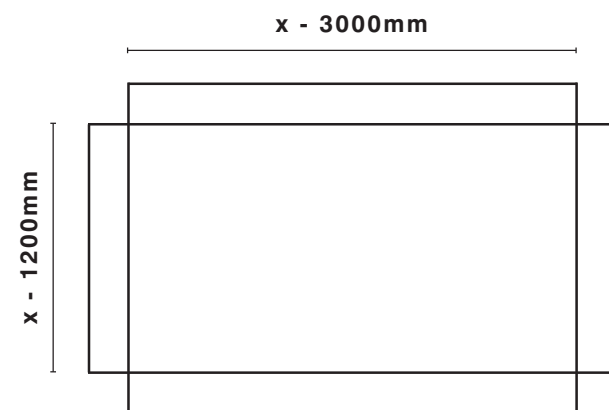
Alternatively we can offer veneered edges with OSIS pattern.



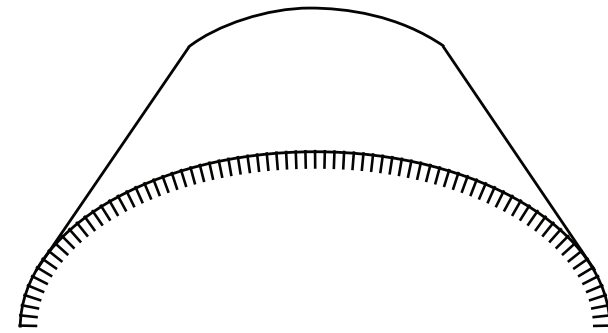
MATERIAL x EDGES MITER



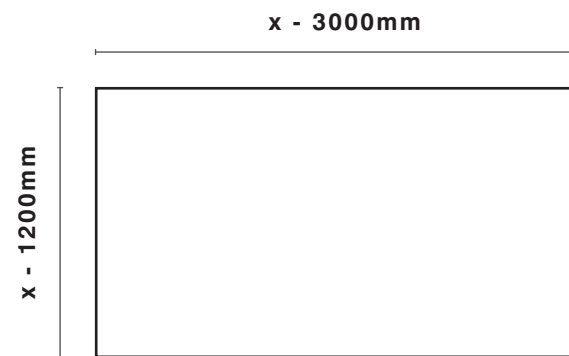
If you wish to add a miter for your board, the measure of the edge will be added to the square meter of the board. The minimum measure of the edge for a miter should be 50 mm.



MATERIAL x EDGES SLOTTED MDF



For special requirements and radial solutions, we can offer a veneered slotted mdf.





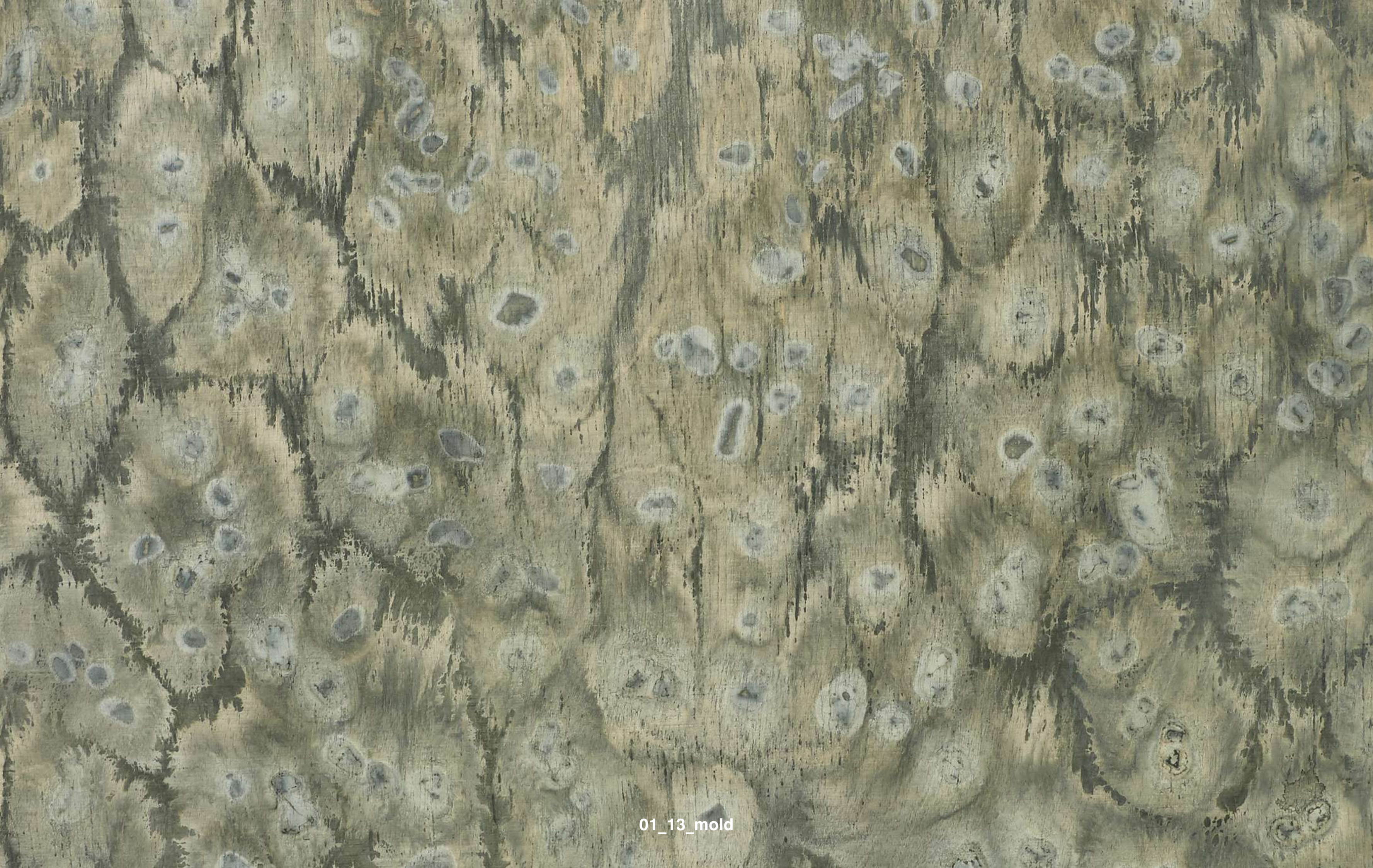
OSIS USED IN PROJECTS

Every OSIS panel is a unique original and can be adjusted to your project and field of application. The OSIS surface is perfect for tables, front desks, wall coverings, or cabinets, to name only a few. As a design studio, we can assist you in realizing your individual piece or deliver OSIS as a panel for further processing by joinery. For further questions please get in touch with osis@lloillov.de



07_29_hazel





01_13_mold



ester bruzkus architekten @ Villa Kellermann // 2020 // Photo: Jens Bösenberg

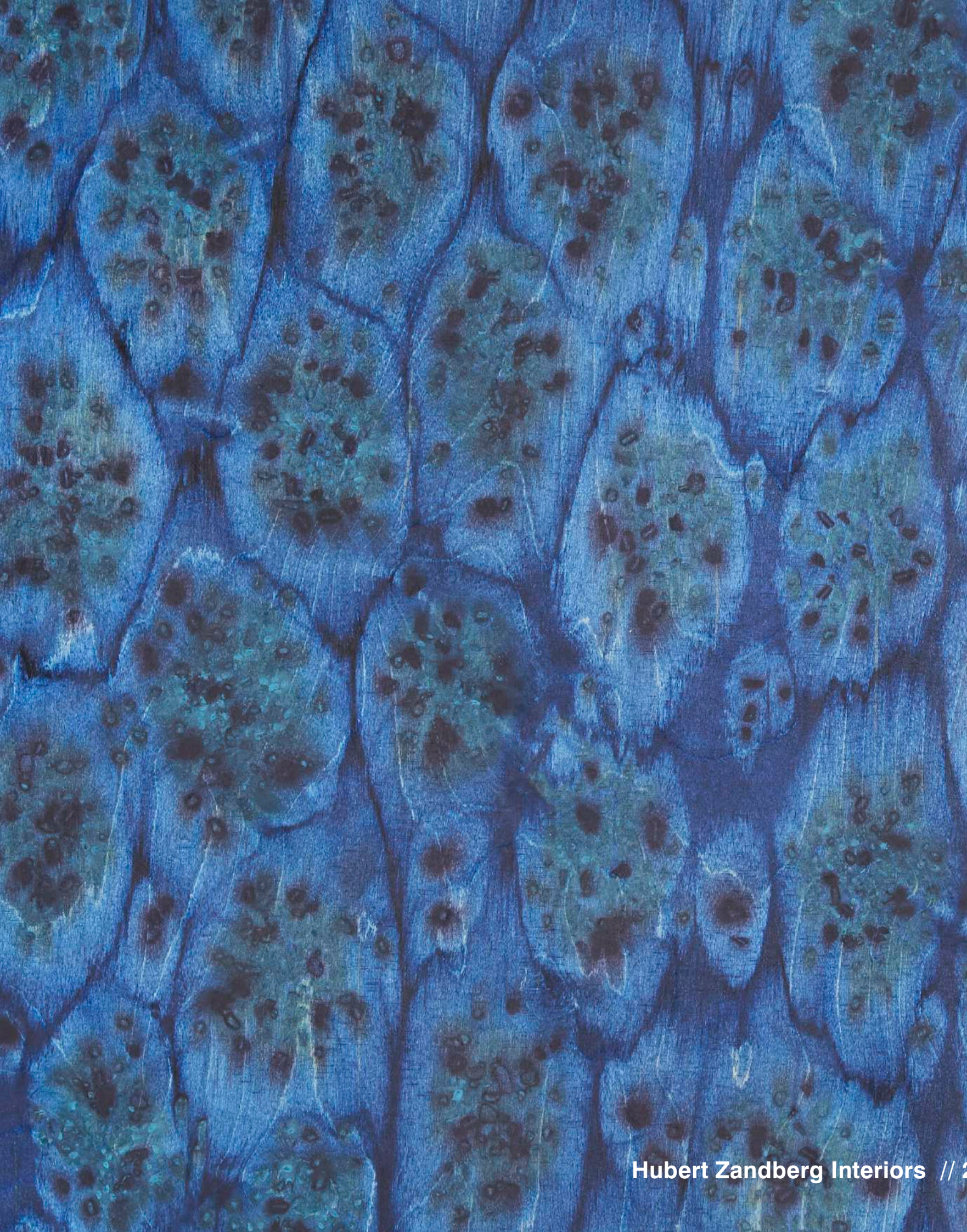
01_57_midnight



ester bruzkus architekten @ Villa Kellermann // 2020 // Photo: Jens Bösenberg



Hubert Zandberg Interiors // 2018 // Phot: Ingrid Rasmussen



Hubert Zandberg Interiors // 2018 // Phot: Ingrid Rasmussen



Joyce Wang Studio @ Belon Restaurant Hong Kong // 2020 // Photo: Edmon Leong



Joyce Wang Studio @ Belon Restaurant Hong Kong // 2020 // Photo: Edmon Leong



Rosa Karl Vienna// 2022 // Photo: Yannik Steer



Mykilos @ Mykilos Showroom // 2022 // Photo: Özgür Albayrak (@2punkt)



Petshop by Karhard // 2023 // Photo: Magda Dziewit





Pressehaus Berlin // 2023 // Photo: Magda Dziewit



OSIS
by
Ilot Ilov

Ilot Ilov ARTWORK SHOP GmbH | Kottbusser Damm 74 | 10967 Berlin | + 49 (0) 30 69 20 55 04 | osis@ilotilov.de | www.ilotilov.com